

## Product datasheet for **SM1220PT**

### TPSAB1 Mouse Monoclonal Antibody [Clone ID: AA1]

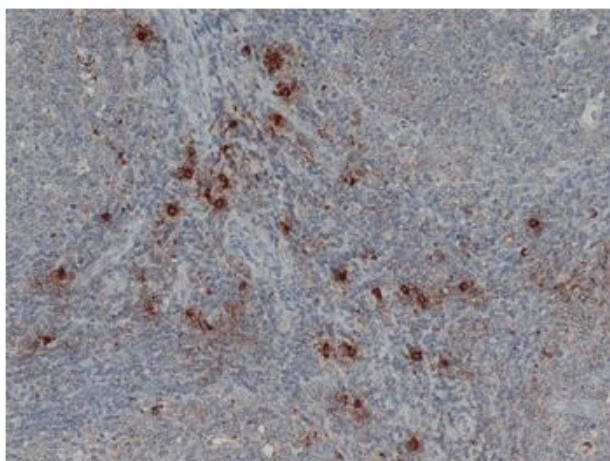
#### Product data:

Product Type:	Primary Antibodies
Clone Name:	AA1
Applications:	ELISA, IHC, WB
Recommended Dilution:	<b>ELISA.</b> <b>Western Blot.</b> <b>Immunofluorescence.</b> <b>Immunohistochemistry on Frozen Sections.</b> <b>Immunohistochemistry on Paraffin Sections:</b> 1/10,000. This product requires either protein digestion pre-treatment of paraffin sections e.g. pronase, or HIER. Sodium citrate buffer pH 6.0 is recommended for this purpose. <b>Recommended Positive Control:</b> Tonsil.
Reactivity:	Canine, Feline, Human, Monkey, Rat
Host:	Mouse
Isotype:	IgG1
Clonality:	Monoclonal
Immunogen:	Human mast cell tryptase purified from Human lung tissue. Spleen cells from immunised BALB/c mice were fused with cells of the mouse NS1 myeloma cell line.
Specificity:	This antibody recognises Mast Cell Tryptase, both <i>alpha</i> and <i>beta</i> isoforms. This antibody is an excellent marker for mast cells, and does not bind to any other cell type in immunohistology.
Formulation:	PBS, pH 7.4 State: Purified State: Liquid purified IgG fraction Preservative: 0.09% Sodium Azide
Concentration:	lot specific
Purification:	Affinity Chromatography on Protein G
Conjugation:	Unconjugated



[View online »](#)

<b>Storage:</b>	Store undiluted at 2-8°C for one month or (in aliquots) at -20°C for longer. Avoid repeated freezing and thawing.
<b>Stability:</b>	Shelf life: one year from despatch.
<b>Gene Name:</b>	tryptase alpha/beta 1
<b>Database Link:</b>	<a href="#">Entrez Gene 54271 Rat</a> <a href="#">Entrez Gene 7177 Human Q15661</a>
<b>Background:</b>	Mast cells contain a number of preformed chemical mediators such as histamine, chymase, carboxypeptidase and proteolytic tryptase. Human Mast Cell Tryptase is considered to be an important marker of mast cell activation as well as an important mediator of inflammation.
<b>Synonyms:</b>	TPSB1, Tryptase I, Mast Cell Tryptase
<b>Protein Families:</b>	Druggable Genome, Protease, Secreted Protein

**Product images:**

Staining of Human Tonsil with Mouse anti Human Mast Cell Tryptase Antibody