

Product datasheet for **SM1214P**

Fibroblasts / Epithelial Cells Mouse Monoclonal Antibody [Clone ID: D7-FIB]

Product data:

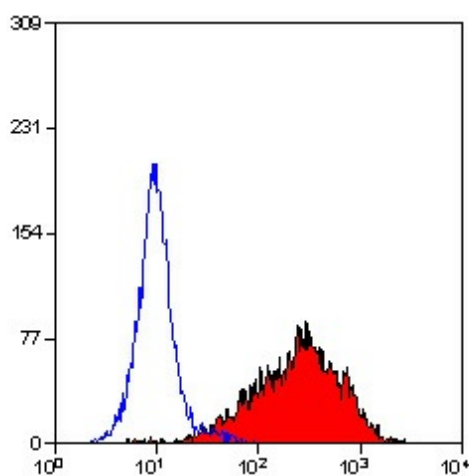
Product Type:	Primary Antibodies
Clone Name:	D7-FIB
Applications:	FC, IHC, IP
Recommended Dilution:	Flow Cytometry: Use 10 µl of a 1/50-1/200 diluted antibody to label 10 ⁶ cells in 100 µl. This product is routinely tested on the KG1 cell line. Immunohistochemistry on Frozen Tissues or Cells: 1/100. This antibody is reported to be sensitive to formaldehyde fixation and tissue processing. Use ice-cold methanol for 5 min or acetone as fixative. Does not work on Paraffin Sections. Immunoprecipitation.
Reactivity:	Human
Host:	Mouse
Isotype:	IgG2a
Clonality:	Monoclonal
Immunogen:	Human foreskin Fibroblasts. Spleen cells from immunised BALB/c mice were fused with cells of the mouse SP2 myeloma cell line.
Specificity:	SM1214P recognizes a 112 kD molecule expressed on the cell surface of human fibroblasts and epithelial cells. In peripheral blood the antibody stains myeloid cells and a very small number of lymphocytes. Studies upon the antigen have shown it to be sensitive to SDS but resistant to trypsin, tunicamycin and collagenase. In immunohistochemical studies the antibody has also been found to bind to epithelium, myoepithelium, smooth muscle cells and some leucocytes. D7-FIB has been shown to be useful as a cell membrane marker to characterize chondrocyte differentiation giving a positive reaction with dedifferentiated human chondrocytes, and negative with differentiated chondrocytes (Van Osch et al., 2001). Negative Species: Mouse, Rat.
Formulation:	PBS containing 0.09% Sodium Azide as preservative State: Purified State: Liquid purified IgG fraction from Tissue Culture Supernatant



[View online »](#)

Concentration:	lot specific
Purification:	Affinity Chromatography on Protein G
Conjugation:	Unconjugated
Storage:	Store undiluted at 2-8°C for one month or (in aliquots) at -20°C for longer. Avoid repeated freezing and thawing.
Stability:	Shelf life: one year from despatch.
Background:	A fibroblast is a connective-tissue cell of mesenchymal (somewhat undifferentiated) origin that secretes proteins from which the extracellular fibrillar matrix of connective tissue forms. Epithelial cells are cells that cover the surface of the body and line its cavities.
Synonyms:	Fibroblast Marker, Fibroblasten

Product images:



Flow Cytometry: Staining of KG1 cells with Mouse anti Human fibroblast antibody.