

Product datasheet for **SM1209P**

CD151 Mouse Monoclonal Antibody [Clone ID: 11G5a]

Product data:

Product Type:	Primary Antibodies
Clone Name:	11G5a
Applications:	ELISA, FC, IHC, IP, WB
Recommended Dilution:	ELISA. Western Blot. Immunoprecipitation. Flow Cytometry: Use 10 µl of 1/50-1/100 diluted antibody to label 10 ⁶ cells or 100 µl of whole blood. Immunohistochemistry on Frozen Sections. Immunohistochemistry on Paraffin Sections: 1/100. This product does not require protein digestion pre-treatment but results are enhanced with with HIER using 0.01M citrate buffer pH6. Recommended Positive Control: Tonsil/spleen.
Reactivity:	Human
Host:	Mouse
Isotype:	IgG1
Clonality:	Monoclonal
Specificity:	This antibody recognizes the CD151 cell surface antigen, also known as PETA-3.
Formulation:	PBS State: Purified State: Liquid purified IgG fraction Preservative: 0.09% Sodium Azide
Concentration:	lot specific
Purification:	Affinity Chromatography on Protein G
Conjugation:	Unconjugated
Storage:	Store undiluted at 2-8°C for one month or (in aliquots) at -20°C for longer. Avoid repeated freezing and thawing.
Stability:	Shelf life: one year from despatch.
Gene Name:	CD151 molecule (Raph blood group)



[View online »](#)

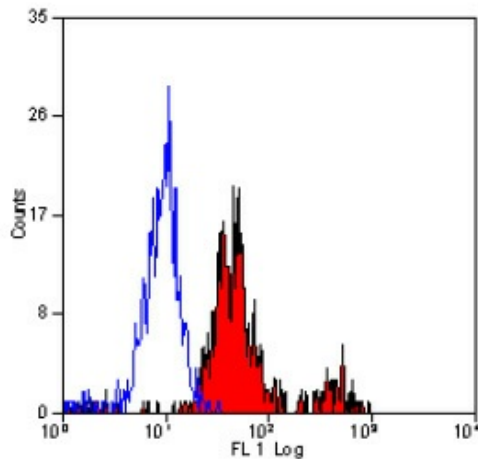
Database Link: [Entrez Gene 977 Human P48509](#)

Background: CD151 is expressed by epithelial cells, endothelial cells, platelets, megakaryocytes, monocytes and in the renal glomeruli and proximal and distal tubules. CD151 is not expressed by lymphocytes or granulocytes. More recently CD151 has also been shown to be expressed by erythrocytes, and to carry the MER2 blood group antigen.

Synonyms: PETA-3, PETA3, GP27, Tetraspanin-24, SFA-1, SFA1

Note: It should be noted that CD151 is very closely associated with the alpha3 beta1 integrin in cells and co-immunoprecipitation may occur even in quite stringent conditions (ref.1).

Product images:



Staining of human peripheral blood platelets with Mouse anti Human CD151 ([SM1209PS]).