

Product datasheet for **SM1201T**

Thrombomodulin (THBD) Mouse Monoclonal Antibody [Clone ID: QBEND/40]

Product data:

Product Type:	Primary Antibodies
Clone Name:	QBEND/40
Applications:	FC, IHC
Recommended Dilution:	Flow Cytometry: Use 10 µl of Neat antibody to label 10e6 cells or 100 µl whole blood. Immunohistochemistry on Frozen Sections: 1/10-1/100. Immunohistochemistry on Paraffin Sections: 1/10-1/50. This product requires antigen retrieval using heat treatment methods prior to staining of paraffin sections. Sodium Citrate pH6.0 is recommended for this purpose. <i>Recommended Positive Control Tissue:</i> Lymph node.
Reactivity:	Human, Rabbit
Host:	Mouse
Isotype:	IgG2a
Clonality:	Monoclonal
Immunogen:	Human Endothelium (Thrombomodulin).
Specificity:	This antibody recognizes all Human endothelium tested. Preliminary evidence suggests that this antibody recognises Thrombomodulin, but does not inhibit Thrombomodulin dependant activation of protein C.
Formulation:	State: Supernatant State: Liquid Tissue Culture Supernatant containing 0.2M Tris/HCl, pH 7.4 and 5-10% Foetal Calf Serum, 0.01% Sodium Azide as preservative.
Conjugation:	Unconjugated
Storage:	Store the antibody undiluted at 2-8°C for one month or (in aliquots) at -20°C for longer. Avoid repeated freezing and thawing.
Stability:	Shelf life: one year from despatch.
Gene Name:	thrombomodulin
Database Link:	Entrez Gene 7056 Human P07204



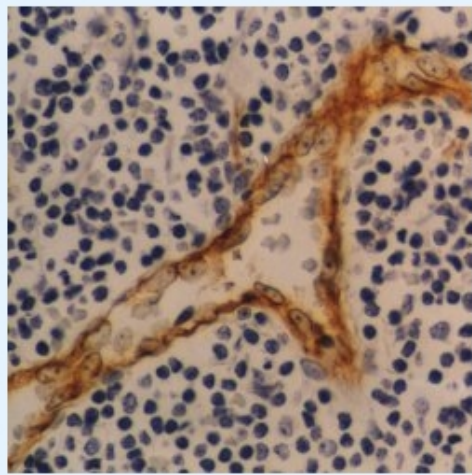
[View online »](#)

Background:

CD141/Thrombomodulin is an exclusively endothelial cell surface glycoprotein that forms a 1:1 complex with thrombin. Binding of thrombin to this high-affinity receptor alters its specificity toward several substrates. The complex activates protein C approximately 1000 times faster than thrombin alone. Activated protein C degrades clotting factors V and VIII; thus, thrombomodulin converts thrombin into a physiologic anticoagulant. Thrombomodulin is also found in the circulatory and urinary systems, the physiologic significance of this is obscure.

Synonyms:

Thrombomodulin, THRM, Fetomodulin

Product images:

Immunohistochemistry: SM1201T CD141 antibody staining of Formalin Fixed, Paraffin Human lymph node tissue.