

## Product datasheet for **SM1201**

### Thrombomodulin (THBD) Mouse Monoclonal Antibody [Clone ID: QBEND/40]

#### Product data:

Product Type:	Primary Antibodies
Clone Name:	QBEND/40
Applications:	FC, IF, IHC
Recommended Dilution:	<b>Flow Cytometry:</b> Use 10 µl of neat antibody to label 10 <sup>6</sup> cells in 100 µl. <b>Immunofluorescence.</b> <b>Immunohistochemistry on Frozen Sections:</b> 1/10-1/100. <b>Immunohistochemistry on Paraffin Sections:</b> 1/10-1/50. This product requires antigen retrieval using heat treatment methods prior to staining of paraffin sections. Sodium Citrate pH6.0 is recommended for this purpose. <b>Recommended Positive Control:</b> Lymph node <i>tissue</i> .
Reactivity:	Human, Rabbit
Host:	Mouse
Isotype:	IgG2a
Clonality:	Monoclonal
Immunogen:	Human endothelium (thrombomodulin).
Specificity:	This antibody recognizes all Human endothelium tested. Preliminary evidence suggests that this antibody recognises Thrombomodulin, but <b>does not</b> inhibit Thrombomodulin dependent activation of protein C.
Formulation:	0.2M Tris/HCl pH7.4 containing 5-10% foetal calf serum State: Supernatant State: Liquid Tissue Culture Supernatant Preservative: 0.01% Sodium Azide
Conjugation:	Unconjugated
Storage:	Store undiluted at 2-8°C for one month or (in aliquots) at -20°C for longer. Avoid repeated freezing and thawing.
Stability:	Shelf life: one year from despatch.
Gene Name:	thrombomodulin
Database Link:	<a href="#">Entrez Gene 7056 Human P07204</a>



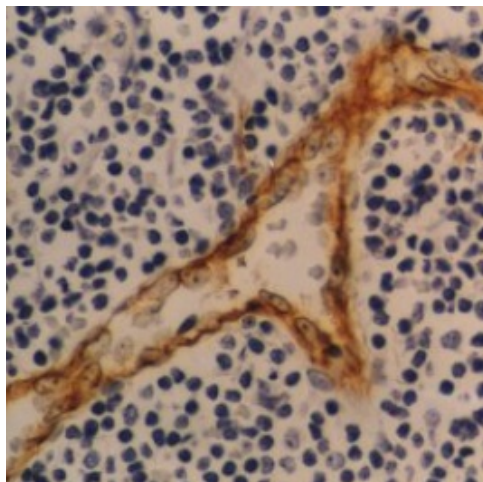
[View online »](#)

**Background:**

CD141/Thrombomodulin is an exclusively endothelial cell surface glycoprotein that forms a 1:1 complex with thrombin. Binding of thrombin to this high-affinity receptor alters its specificity toward several substrates. The complex activates protein C approximately 1000 times faster than thrombin alone. Activated protein C degrades clotting factors V and VIII; thus, thrombomodulin converts thrombin into a physiologic anticoagulant. Thrombomodulin is also found in the circulatory and urinary systems, the physiologic significance of this is obscure.

**Synonyms:**

Thrombomodulin, THRM, Fetomodulin

**Product images:**

CD141 - SM1201 - Human lymph node. Formalin fixed, paraffin processed tissue.