

## Product datasheet for **SM1182PT**

### **C5R1 (C5AR1) (N-term) Mouse Monoclonal Antibody [Clone ID: S5/1]**

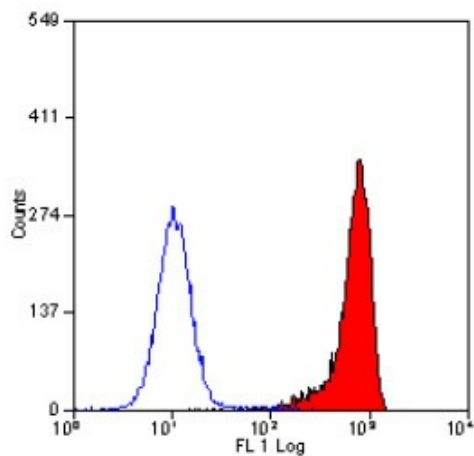
#### **Product data:**

Product Type:	Primary Antibodies
Clone Name:	S5/1
Applications:	FC, IHC, WB
Recommended Dilution:	<b>Flow Cytometry:</b> Use 10µl of 1/50-1/100 diluted antibody to label 5 x 10 <sup>6</sup> cells in 100 µl. <b>Immunohistochemistry on Paraffin Sections.</b> <b>Western Blot.</b> <b>Functional Assays.</b>
Reactivity:	Bovine, Human, Rabbit
Host:	Mouse
Isotype:	IgG2a
Clonality:	Monoclonal
Immunogen:	Synthetic peptide comprising the N-terminal extracellular domain (Met1 - Asn31) of the C5a receptor (C5aR) CD88. Spleen cells from immunised BALB/c mice were fused with cells of the X63-Ag8 myeloma cell line.
Specificity:	This antibody recognizes the C5a receptor (C5aR) CD88. Clone S5/1 was raised against a synthetic peptide comprising the N-terminal extracellular domain of the C5aR (met1-Asn31) and has recently been shown to recognise the heptameric peptide (D15DKD <sup>T</sup> LD21). Clone S5/1 has been shown to inhibit the binding of C5a to its receptor. We recommend the use of SM1182A for functional studies.
Formulation:	PBS State: Purified State: Liquid purified Ig fraction Preservative: 0.09% Sodium Azide
Concentration:	lot specific
Purification:	Ammonium Sulphate Precipitation
Conjugation:	Unconjugated
Storage:	Store undiluted at 2-8°C for one month or (in aliquots) at -20°C for longer. Avoid repeated freezing and thawing.



[View online »](#)

Stability:	Shelf life: one year from despatch.
Gene Name:	complement component 5a receptor 1
Database Link:	<a href="#">Entrez Gene 728 Human P21730</a>
Background:	CD88 is predominantly expressed on cells of the myeloid lineage.
Synonyms:	C5a-R, C5aR, C5AR1, Complement Component 5a Receptor 1

**Product images:**

Staining of human peripheral blood granulocytes with MOUSE ANTI HUMAN CD88