

Product datasheet for **SM1182AS**

C5R1 (C5AR1) (N-term) Mouse Monoclonal Antibody [Clone ID: S5/1]

Product data:

Product Type:	Primary Antibodies
Clone Name:	S5/1
Applications:	FC, FN, IHC
Recommended Dilution:	Flow cytometry: 1/25-1/200; Use 10 µl to label 5x10e5 cells. Immunohistochemistry on Paraffin sections: This product does not require protein digestion pretreatment nor antigen retrieval using heat treatment prior to staining of paraffin sections. Functional assays. Does not work on frozen sections or in immunoprecipitation.
Reactivity:	Bovine, Human, Rabbit
Host:	Mouse
Isotype:	IgG2a
Clonality:	Monoclonal
Immunogen:	Synthetic peptide comprising the N-terminal extracellular domain (Met1 - Asn31) of the C5a receptor (C5aR) CD88. Spleen cells from immunised BALB/c mice were fused with cells of the X63-Ag8 myeloma cell line.
Specificity:	The antibody recognises the C5a receptor (C5aR) CD88, which is predominantly expressed on cells of the myeloid lineage. Clone S5/1 (raised against a synthetic peptide Met1 -Asn31) has recently been shown to recognise the heptameric peptide (D15DKDTLD21). Clone S5/1 inhibits C5a binding to its receptor.
Formulation:	PBS without stabilizer or preservative State: Azide Free State: Liquid purified IgG
Concentration:	lot specific
Purification:	Protein G chromatography
Conjugation:	Unconjugated
Storage:	Upon receipt, store undiluted (in aliquots) at -20°C. Avoid repeated freezing and thawing.



[View online »](#)

Stability: Shelf life: one year from despatch.

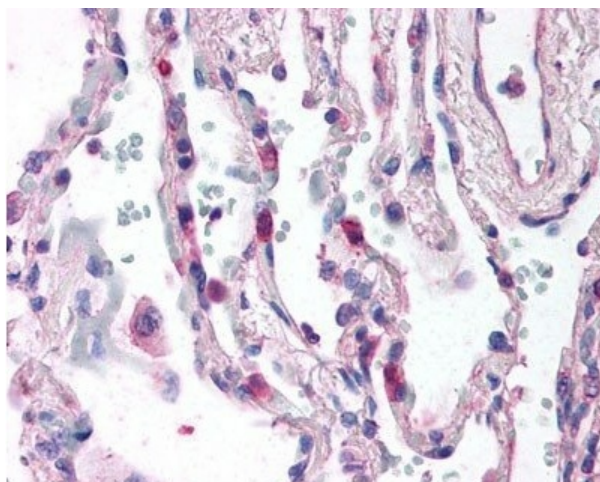
Gene Name: complement component 5a receptor 1

Database Link: [Entrez Gene 728 Human P21730](#)

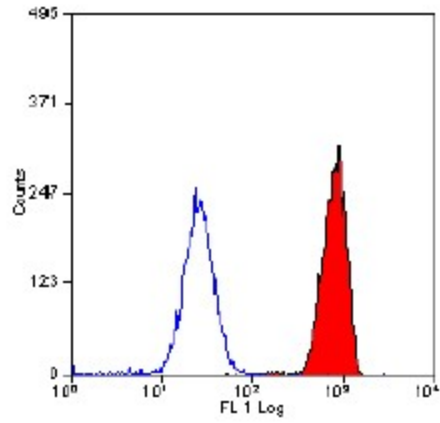
Background: The human anaphylatoxin C5a is a 74 residue glycopeptide which is generated by proteolytic cleavage of the complement factor C5 in the course of complement activation. A variety of biological effects evoked by C5a can be demonstrated, rendering this molecule an important mediator of inflammation, with granulocytes and macrophages as the main target cells. All cellular responses to C5a are specifically mediated by interactions with the membrane bound C5a receptor, a seven transmembrane GTP binding coupled receptor that belongs to the rhodopsin supergene family. C5a receptor 1 expression has been reported in myeloid blood cells, brain, liver, lung, spleen, heart, kidney, and intestinal tract. ESTs have been isolated from B cell/lung/testis, nerve, and placenta libraries.

Synonyms: C5a-R, C5aR, C5AR1, Complement Component 5a Receptor 1

Product images:



Immunohistochemical staining of paraffin embedded human lung with mouse anti-human CD88 / C5R1 antibody.



Staining of human peripheral blood granulocytes with antibody.