

Product datasheet for **SM1178P**

VCAM1 Mouse Monoclonal Antibody [Clone ID: 1.G11B1]

Product data:

Product Type:	Primary Antibodies
Clone Name:	1.G11B1
Applications:	ELISA, FC, IHC, IP
Recommended Dilution:	ELISA. Immunoprecipitation. Flow Cytometry (1/10-1/50). Immunohistochemistry on Frozen Tissues. Functional Assays: This antibody inhibits cellular adhesion mediated by VCAM-1. Removal of Sodium Azide is recommended prior to use.
Reactivity:	Human, Monkey, Porcine
Host:	Mouse
Isotype:	IgG1
Clonality:	Monoclonal
Specificity:	This antibody recognises Human VCAM-1, a 110 kD molecule whose ligand is VLA-4. The antigen is expressed on activated endothelial cells and some tissue macrophages, bone marrow fibroblasts and myoblasts. Cross reactivity to Porcine CD106 has been reported.
Formulation:	PBS containing 0.09% Sodium Azide as preservative and 0.1% BSA as stabilizer. State: Aff - Purified State: Liquid purified Ig fraction.
Concentration:	lot specific
Purification:	Affinity Chromatography on Protein A.
Conjugation:	Unconjugated
Storage:	Store the antibody undiluted at 2-8°C for one month or (in aliquots) at -20°C for longer. Avoid repeated freezing and thawing. Shelf live: one year from despatch.
Gene Name:	vascular cell adhesion molecule 1
Database Link:	Entrez Gene 7412 Human P19320



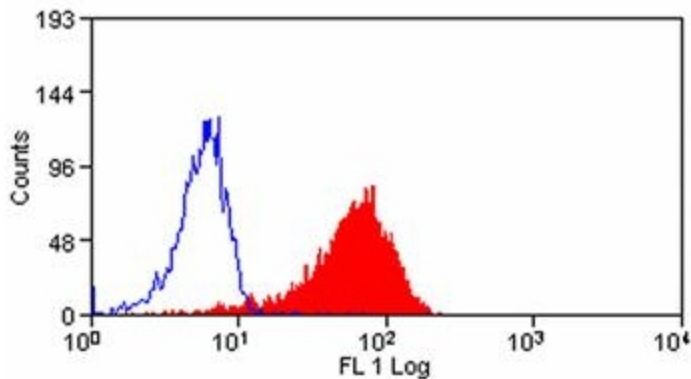
[View online »](#)

Background:

CD106 (known as VCAM1) is important in cell-cell recognition. Appears to function in leukocyte-endothelial cell adhesion. Interacts with the integrins alpha4 beta1 (beta 1 integrin VLA4) and alpha4 beta7 on leukocytes, and mediates both adhesion and signal transduction. The VCAM1/VLA4 interaction may play a pathophysiologic role both in immune responses and in leukocyte emigration to sites of inflammation. VCAM1 is also expressed by several non endothelial cell types including some macrophages, follicular dendritic cells and bone marrow, stromal cells.

Synonyms:

V-CAM 1, INCAM-100, L1CAM, VCAM-1

Product images:

KM-H2 Cells stained with Mouse Anti Human CD106 (SM1178P).