

Product datasheet for **SM1177RT**

CD105 (ENG) Mouse Monoclonal Antibody [Clone ID: SN6]

Product data:

Product Type:	Primary Antibodies
Clone Name:	SN6
Applications:	FC
Recommended Dilution:	Flow Cytometry: Use 10 µl of neat antibody to label 10e6 cells in 100 µl.
Reactivity:	Equine, Human
Host:	Mouse
Isotype:	IgG1
Clonality:	Monoclonal
Immunogen:	Partially purified cell membrane antigens from fresh leukaemia cells
Specificity:	This antibody recognises the human CD105 cell surface antigen, a glycoprotein homodimer of 95 kD subunits.
Formulation:	PBS, pH 7.4, containing 0.09% sodium azide as preservative and 1% BSA as stabilizer. Label: PE State: Lyophilized purified IgG fraction. Label: R. Phycoerythrin (RPE)
Reconstitution Method:	Restore with 1.0 ml distilled water.
Purification:	Affinity Chromatography on Protein G.
Conjugation:	PE
Storage:	Prior to and following reconstitution store the antibody undiluted at 2-8°C. DO NOT FREEZE! This Product is photosensitive and should be protected from light.
Stability:	Shelf life: one year from despatch.
Gene Name:	endoglin
Database Link:	Entrez Gene 2022 Human P17813



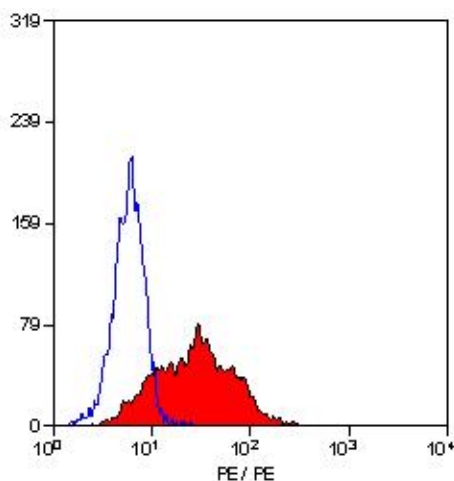
[View online »](#)

Background:

CD105 or Endoglin is a Type I transmembrane protein, which is highly expressed on human vascular endothelial cells. It exists on an O- and N-glycosylated homodimer. Up regulation of endoglin expression has been demonstrated in tumor vasculature and proliferating cells, suggesting that it is a proliferation associated endothelial marker. CD105 binds to TGF beta 1 and 3 with high affinity but not to TGF beta 2.

Synonyms:

ENG, END, HHT1, ORW, ORW1

Product images:

Staining of KG1 cells with Mouse anti Human CD105 PE ([SM1177R]/RT).