

Product datasheet for **SM1177PT**

CD105 (ENG) Mouse Monoclonal Antibody [Clone ID: SN6]

Product data:

Product Type:	Primary Antibodies
Clone Name:	SN6
Applications:	FC, IHC, IP, WB
Recommended Dilution:	Flow Cytometry: Use 10 µl of 1/50 diluted CD105 antibody to label 10 ⁶ cells in 100 µl. Western Blot. Immunoprecipitation. Immunohistochemistry on Frozen Sections. Please note: The epitope recognised by this antibody is reported to be sensitive to formaldehyde fixation and tissue processing. The use of acetone fixation for frozen sections is recommended.
Reactivity:	Equine, Human, Monkey
Host:	Mouse
Isotype:	IgG1
Clonality:	Monoclonal
Immunogen:	Partially purified cell membrane antigens from fresh leukemia cells. Spleen cells from immunised BALB/c mice were fused with cells of the mouse P3/NS1/1-Ag4-1 myeloma cell line.
Specificity:	This antibody recognises the CD105 cell surface antigen.
Formulation:	PBS, pH7.4 containing 0.09% Sodium Azide as preservative. State: Purified State: Liquid purified IgG fraction.
Concentration:	lot specific
Purification:	Affinity Chromatography on Protein G
Conjugation:	Unconjugated
Storage:	Store the antibody undiluted at 2-8°C for one month or (in aliquots) at -20°C for longer. Avoid repeated freezing and thawing.
Stability:	Shelf life: one year from despatch.
Gene Name:	endoglin



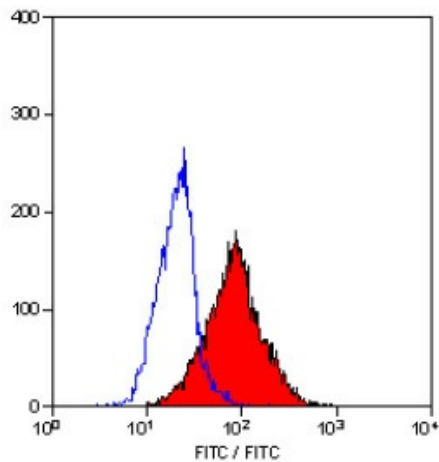
[View online »](#)

Database Link: [Entrez Gene 2022 Human P17813](#)

Background: CD105 is a glycoprotein homodimer of 95kD subunits. CD105 is also known as endoglin, and is expressed by endothelial cells, activated monocytes and some leukaemia cells.

Synonyms: ENG, END, HHT1, ORW, ORW1

Product images:



Staining of KG1 cells with Mouse Anti Human CD105 antibody.