

Product datasheet for **SM1177FT**

CD105 (ENG) Mouse Monoclonal Antibody [Clone ID: SN6]

Product data:

Product Type:	Primary Antibodies
Clone Name:	SN6
Applications:	FC
Recommended Dilution:	Flow Cytometry: Use 10 µl of neat antibody to label 10 ⁶ cells in 100 µl.
Reactivity:	Equine, Human
Host:	Mouse
Isotype:	IgG1
Clonality:	Monoclonal
Immunogen:	Partially purified cell membrane antigens from fresh leukaemia cells. Spleen cells from immunised BALB/c mice were fused with cells of the mouse P3/NS1/1-Ag4-1 myeloma cell line
Specificity:	SM1177F recognizes the CD105 cell surface antigen.
Formulation:	PBS Label: FITC State: Liquid purified IgG fraction Stabilizer: 1% BSA Preservative: 0.09% Sodium Azide Label: Fluorescein Isothiocyanate Isomer 1
Concentration:	lot specific
Purification:	Affinity Chromatography on Protein G from tissue culture supernatant.
Conjugation:	FITC
Storage:	Store undiluted at 2-8°C for one month or (in aliquots) at -20°C for longer. This product is photosensitive and should be protected from light. Avoid repeated freezing and thawing.
Stability:	Shelf life: one year from despatch.
Gene Name:	endoglin
Database Link:	Entrez Gene 2022 Human P17813



[View online »](#)

Background:

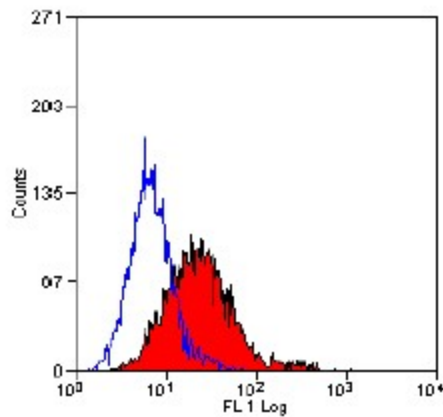
CD105 or Endoglin is a Type I transmembrane protein, which is highly expressed on human vascular endothelial cells. It exists on an O- and N-glycosylated homodimer. Up regulation of endoglin expression has been demonstrated in tumor vasculature and proliferating cells, suggesting that it is a proliferation associated endothelial marker. CD105 binds to TGF beta 1 and 3 with high affinity but not to TGF beta 2.

CD105 is a glycoprotein homodimer of 95 kD subunits.

CD105 is expressed by endothelial cells, activated monocytes and some leukaemia cells.

Synonyms:

ENG, END, HHT1, ORW, ORW1

Product images:

Staining of KG1 cells with mouse-anti-human CD105-FITC antibody