

## Product datasheet for **SM1149F**

### CD62L (SELL) Mouse Monoclonal Antibody [Clone ID: FMC46]

#### Product data:

Product Type:	Primary Antibodies
Clone Name:	FMC46
Applications:	FC
Recommended Dilution:	Flow Cytometry.
Reactivity:	Bovine, Human, Monkey
Host:	Mouse
Isotype:	IgG2b
Clonality:	Monoclonal
Immunogen:	PHA stimulated lymphoblasts. Spleen cells from immunised BALB/c mice were fused with cells of the mouse NS1 myeloma cell line.
Specificity:	This antibody recognizes CD62L, also known as L-selectin.
Formulation:	PBS, pH 7.4 containing 0.09% Sodium Azide as preservative and 1% BSA as stabilizer. Label: FITC State: Liquid purified IgG fraction. Label: Fluorescein Isothiocyanate Isomer 1
Concentration:	lot specific
Purification:	Affinity Chromatography on Protein G.
Conjugation:	FITC
Storage:	Store the antibody undiluted at 2-8°C for one month or (in aliquots) at -20°C for longer. This product is photosensitive and should be protected from light. Avoid repeated freezing and thawing.
Stability:	Shelf life: one year from despatch.
Gene Name:	selectin L
Database Link:	<a href="#">Entrez Gene 6402 Human P14151</a>



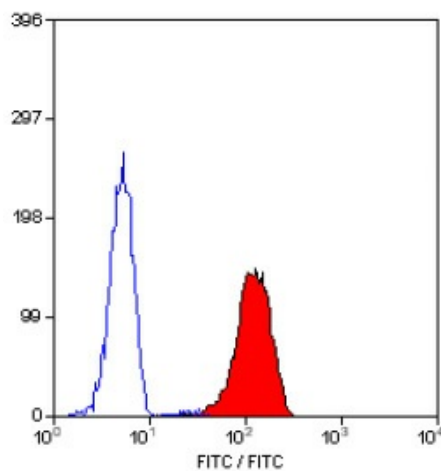
[View online »](#)

**Background:**

CD62L is a 74-95kDa member of the selectin family of adhesion receptors, which acts as a ligand for both CD62-P (P-selectin) and CD62E (E-selectin). Human CD62L is constitutively expressed on most leucocytes including monocytes, granulocytes, lymphocytes, NK cells, bone marrow myeloid progenitor cells and on a subset of thymocytes. CD62L plays an important role in leucocyte tethering and rolling on the endothelial cell surface and for the homing of naive lymphocytes to lymph nodes and Peyer's patches via HEV. Neutrophils require a constant supply of this molecule on the cell surface for migration into peripheral tissues and adhesion to activated endothelium at sites of inflammation, where CD62L is rapidly shed as soluble L-selectin, but surface expression still remains. The expression of CD62L is down regulated on lymphocytes and neutrophils by PMA stimulation.

**Synonyms:**

SELL, LNHR, LYAM1, Leu-8, TQ1, gp90-MEL, LECAM1, LAM-1

**Product images:**


Staining of human peripheral blood granulocytes with Mouse Anti Human CD62L-FITC.