

Product datasheet for **SM1145R**

CD59 Mouse Monoclonal Antibody [Clone ID: MEM-43]

Product data:

Product Type:	Primary Antibodies
Clone Name:	MEM-43
Applications:	FC
Recommended Dilution:	Flow Cytometry.
Reactivity:	Human
Host:	Mouse
Isotype:	IgG2a
Clonality:	Monoclonal
Specificity:	This antibody reacts with a PI-linked glycoprotein, Mw 18-20kD found on all types of leucocytes including platelets. MEM-43 has been shown to stimulate NK activity.
Formulation:	BS, pH 7.4 containing 0.09% Sodium Azide as preservative and 1% BSA as stabilizer. Label: PE State: Lyophilized purified IgG fraction. Label: R. Phycoerythrin (RPE)
Reconstitution Method:	Restore with distilled water.
Purification:	Affinity chromatography on Protein A.
Conjugation:	PE
Storage:	Prior to and following reconstitution store the antibody undiluted at 2-8°C. DO NOT FREEZE! This product is photosensitive and should be protected from light.
Stability:	Shelf life: one year from despatch.
Gene Name:	CD59 molecule
Database Link:	Entrez Gene 966 Human P13987



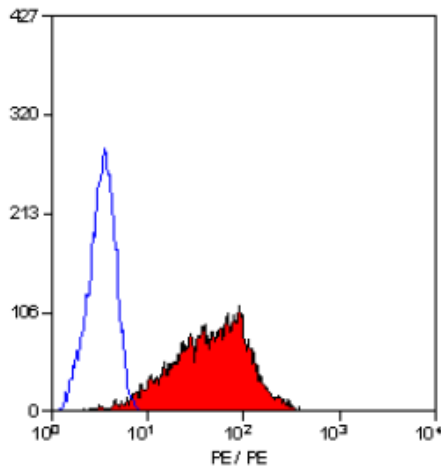
[View online »](#)

Background:

CD59 is an LY6 like protein expressed in human lymphoid cells (haemopoietic and non-haemopoietic cells), regulates the action of the complement membrane attack complex on homologous cells. It is a potent inhibitor of the complement membrane attack complex action. It acts by binding to the C8 and/or C9 complements of the membrane attack complex, thereby preventing incorporation of the multiple copies of C9 required for complete formation of the osmolytic pore. This inhibitor appears to be species-specific. CD59 is also involved in signal transduction for T-cell activation complexed to a protein tyrosine kinase

Synonyms:

MAC-inhibitory protein, Protectin, MEM43 antigen, MIC11, MIN1, MIN2, MIN3, MSK21, MACIF, MAC-IP, MIRL, HRF20, HRF-20

Product images:

Staining of human peripheral blood lymphocytes with Mouse Anti Human CD59-RPE (SM1145R/RT).