

Product datasheet for **SM1145F**

CD59 Mouse Monoclonal Antibody [Clone ID: MEM-43]

Product data:

| | |
|-----------------------|--|
| Product Type: | Primary Antibodies |
| Clone Name: | MEM-43 |
| Applications: | FC |
| Recommended Dilution: | Flow Cytometry analysis of Human blood cells using 20 µl reagent / 100 µl of whole blood or 10e6 cells in a suspension. |
| Reactivity: | Human |
| Host: | Mouse |
| Isotype: | IgG2a |
| Clonality: | Monoclonal |
| Immunogen: | Thymocytes and T lymphocytes |
| Specificity: | SM1145F reacts with well defined epitope (W40, R-53) on CD59 (Protectin), an 18-20 kDa glycosylphosphatidylinositol (GPI)-anchored glycoprotein expressed on all hematopoietic cells; it is widely present on cells in all tissues. |
| Formulation: | PBS containing 15 mM Sodium Azide and 0.2% (w/v) high-grade protease free BSA as a stabilizing agent Label: FITC State: Liquid purified Ig fraction Label: Conjugated with Fluorescein isothiocyanate under optimum conditions. The reagent is free of unconjugated |
| Conjugation: | FITC |
| Storage: | Store the antibody at 2-8°C. DO NOT FREEZE! This product is photosensitive and should be protected from light. |
| Stability: | Shelf life: one year from despatch. |
| Gene Name: | CD59 molecule |
| Database Link: | Entrez Gene 966 Human P13987 |



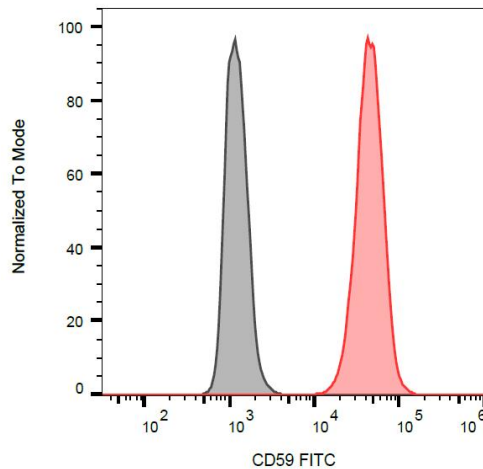
[View online »](#)

Background:

CD59 (Protectin) is a small (18-20 kDa) GPI-anchored ubiquitously expressed inhibitor of the membrane attack complex (MAC). It is thus the key regulator that preserves the autologous cells from terminal effector mechanism of the complement cascade. CD59 associates with C5b-8 complex and thereby counteracts appropriate formation of cytolytic pore within the plasma membrane. CD59 is also an low-affinity ligand of human CD2 and causes T cell costimulation.

Synonyms:

MAC-inhibitory protein, Protectin, MEM43 antigen, MIC11, MIN1, MIN2, MIN3, MSK21, MACIF, MAC-IP, MIRL, HRF20, HRF-20

Product images:

Surface staining of HL-60 (positive) and SP2 (negative) cells with anti-human CD59 (MEM-43) FITC.