

Product datasheet for **SM1140R**

Integrin alpha 6 (ITGA6) Mouse Monoclonal Antibody [Clone ID: 450-30A]

Product data:

Product Type:	Primary Antibodies
Clone Name:	450-30A
Applications:	FC
Recommended Dilution:	Flow Cytometry.
Reactivity:	Human
Host:	Mouse
Isotype:	IgG1
Clonality:	Monoclonal
Immunogen:	Alpha 6 beta 4 integrin purified from A431 cells. Spleen cells from immunised BALB/c mice were fused with cells of the mouse SP2/0 myeloma cell line.
Specificity:	This antibody recognises the VLA-6 cell surface antigen, also known as the alpha 6 integrin and as CD49f.
Formulation:	PBS containing 0.09% Sodium Azide as preservative, 5% sucrose and 1% BSA as stabilizer. Label: PE State: Lyophilized purified IgG fraction. Label: R. Phycoerythrin (RPE)
Reconstitution Method:	Restore with distilled water.
Concentration:	lot specific
Purification:	Affinity Chromatography on Protein G.
Conjugation:	PE
Storage:	Prior to and following reconstitution store the antibody undiluted at 2-8°C. DO NOT FREEZE! This product is photosensitive and should be protected from light.
Stability:	Shelf life: one year from despatch.
Gene Name:	integrin subunit alpha 6
Database Link:	Entrez Gene 3655 Human P23229

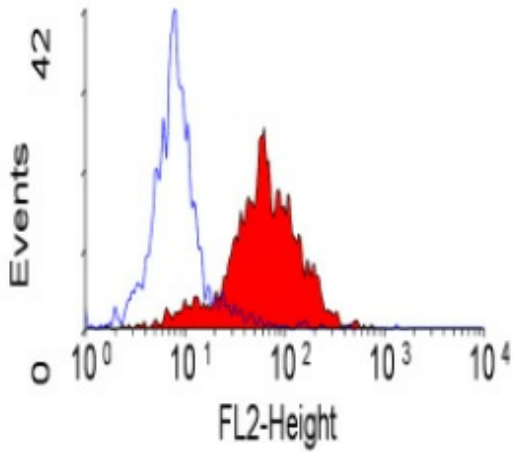


[View online »](#)

Background: CD49f is expressed by platelets, weakly by monocytes and by a subset of lymphocytes.

Synonyms: Integrin alpha-6, VLA-6, VLA6

Product images:



staining of human peripheral blood monocytes.