

## Product datasheet for **SM1140PT**

### Integrin alpha 6 (ITGA6) Mouse Monoclonal Antibody [Clone ID: 450-30A]

#### Product data:

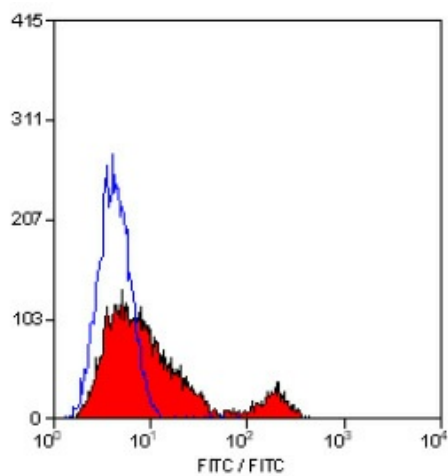
Product Type:	Primary Antibodies
Clone Name:	450-30A
Applications:	FC, IHC
Recommended Dilution:	Flow cytometry: Use 10 µl of 1/10-1/50 diluted antibody to label 10e6 cells in 100 µl. Immunohistochemistry on Frozen Sections (1/50-1/100). Recommended positive control tissue: Tonsil.
Reactivity:	Human
Host:	Mouse
Isotype:	IgG1
Clonality:	Monoclonal
Immunogen:	a6b4 integrin purified from A431 cells. Spleen cells from immunised BALB/c mice were fused with cells of the mouse SP2/0 myeloma cell line.
Specificity:	This antibody recognises CD49f, also known as VLA-6 and alpha 6 integrin.
Formulation:	PBS, pH7.4 containing 0.09% Sodium Azide as preservative. State: Purified State: Liquid purified IgG fraction.
Concentration:	lot specific
Purification:	Affinity Chromatography on Protein G.
Conjugation:	Unconjugated
Storage:	Store the antibody undiluted at 2-8°C for one month or (in aliquots) at -20°C for longer. Avoid repeated freezing and thawing.
Stability:	Shelf life: one year from despatch.
Gene Name:	integrin subunit alpha 6
Database Link:	<a href="#">Entrez Gene 3655 Human P23229</a>
Background:	CD49f is expressed by platelets, weakly by monocytes and by a subset of lymphocytes. CD49f is also widely expressed on epithelial tissues.



[View online »](#)

Synonyms: Integrin alpha-6, VLA-6, VLA6

### Product images:



Staining of human peripheral blood lymphocytes with Mouse Anti Human CD49f.