

Product datasheet for **SM1140P**

Integrin alpha 6 (ITGA6) Mouse Monoclonal Antibody [Clone ID: 450-30A]

Product data:

Product Type:	Primary Antibodies
Clone Name:	450-30A
Applications:	FC
Recommended Dilution:	Flow Cytometry: Use 10 µl of 1/10-1/50 diluted antibody to label 10e6 cells in 100 µl. Immunohistochemistry on Frozen Sections: 1/50-1/100. <i>Recommended Positive Control:</i> Tonsil. Not Suitable for Paraffin.
Reactivity:	Human
Host:	Mouse
Isotype:	IgG1
Clonality:	Monoclonal
Immunogen:	a6b4 integrin purified from A431 cells. Spleen cells from immunised BALB/c mice were fused with cells of the mouse SP2/0 myeloma cell line.
Specificity:	This antibody recognises the VLA-6 cell surface antigen, also known as the alpha 6 integrin and as CD49f.
Formulation:	PBS, pH7.4 containing 0.09% Sodium Azide as preservative. State: Purified State: Liquid purified IgG fraction.
Concentration:	lot specific
Purification:	Affinity Chromatography on Protein G.
Conjugation:	Unconjugated
Storage:	Store the antibody undiluted at 2-8°C for one month or (in aliquots) at -20°C for longer. Avoid repeated freezing and thawing.
Stability:	Shelf life: one year from despatch.
Gene Name:	integrin subunit alpha 6
Database Link:	Entrez Gene 3655 Human P23229



[View online »](#)

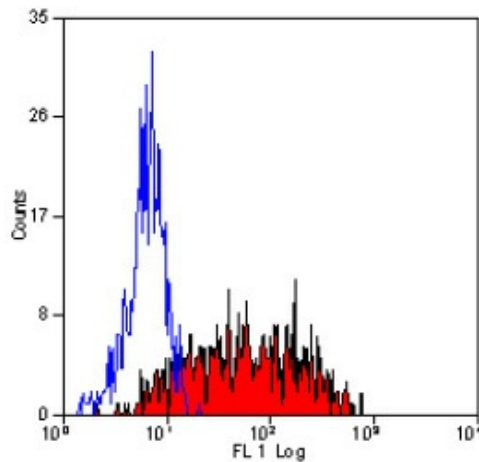
Background:

Integrins are important extracellular matrix (ECM) receptor proteins located on cell surfaces. They are heterodimers composed of an alpha and a beta transmembrane glycoprotein subunit. Around twenty two different integrins (different alpha/ beta subunit combinations) are found in nature. Integrins are generally present in high concentrations at the cell surface, but, unlike most other cell surface receptors, they bind ligands with very low affinity. Due to their weak individual binding, integrins need to cluster and bind in groups in order to effectively bind the ECM. Integrins bind many different ligands including laminin. Each integrin is made up of a large N terminal extracellular domain that binds the ECM ligand and a small C terminal cytoplasmic domain that mediates interaction with the actin cytoskeleton and signaling function. Integrin alpha 6 complexes are receptors for laminins, which are components of basement membranes. Integrin alpha 6 complexes may play an important role in embryogenesis.

CD49f is expressed by platelets, weakly by monocytes and by a subset of lymphocytes. CD49f is also widely expressed on epithelial tissues.

Synonyms:

Integrin alpha-6, VLA-6, VLA6

Product images:

Staining of human peripheral blood monocytes with Mouse anti Human CD49f