

Product datasheet for **SM1129R**

Integrin alpha 4 (ITGA4) Mouse Monoclonal Antibody [Clone ID: 44H6]

Product data:

Product Type:	Primary Antibodies
Clone Name:	44H6
Applications:	FC
Recommended Dilution:	Flow Cytometry: Use 10 µl of neat antibody to label to label 10e6 cells or 100 µl whole blood.
Reactivity:	Human
Host:	Mouse
Isotype:	IgG1
Clonality:	Monoclonal
Immunogen:	HOON pre-B leukaemia cell line. Spleen cells from immunised BALB/c mice were fused with cells of the SP2.0-Ag14 mouse myeloma cell line.
Specificity:	This antibody recognises CD49d, also known as integrin alpha 4 subunit, which associates with either integrin beta 1 (to form VLA-4) or beta 7.
Formulation:	PBS, pH7.4 Label: PE State: Lyophilized purified IgG fraction Stabilizer: 1% BSA 5% Sucrose Inert Bulking Reagent Preservative: 0.09% Sodium Azide Label: R. Phycoerythrin (RPE)
Reconstitution Method:	Restore with 1.0 ml distilled water.
Purification:	Ion Exchange Chromatography.
Conjugation:	PE
Storage:	Prior to and following reconstitution store the antibody undiluted at 2-8°C. DO NOT FREEZE! This product is photosensitive and should be protected from light.
Stability:	Shelf life: one year from despatch.



[View online »](#)

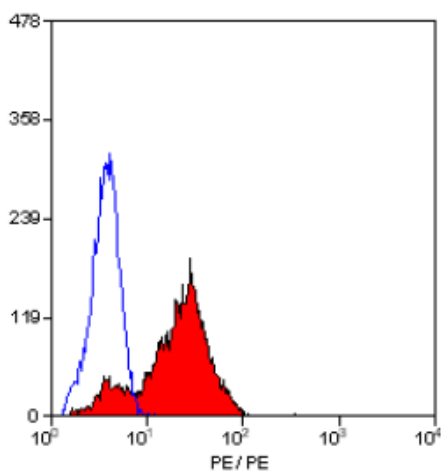
Gene Name: integrin subunit alpha 4

Database Link: [Entrez Gene 3676 Human P13612](#)

Background: CD49d is expressed by lymphocytes, monocytes, eosinophils and thymocytes. VLA-4 mediates cell adhesion to VCAM-1 and fibronectin.

Synonyms: Integrin alpha-4, Integrin alpha-IV, VLA-4, VLA4

Product images:



Staining of human peripheral blood lymphocytes with Mouse Anti Human CD49d-RPE (SM1129R/RT).