

## Product datasheet for **SM1125R**

### CD49b (ITGA2) Mouse Monoclonal Antibody [Clone ID: AK7]

#### Product data:

|                        |   |
|------------------------|---|
| Product Type:          | Primary Antibodies  |
| Clone Name:            | AK7   |
| Applications:          | FC  |
| Recommended Dilution:  | <b>Flow Cytometry:</b> Use 10 µl of neat CD49b antibody to label 10e6 cells or 100 µl human whole blood.  |
| Reactivity:            | Human, Monkey   |
| Host:                  | Mouse   |
| Isotype:               | IgG1  |
| Clonality:             | Monoclonal  |
| Specificity:           | Recognizes the Integrin alpha 2 subunit (CD49b), which is a 160kD glycoprotein that non-covalently associates with the 130kD integrin beta1 subunit to form the VLA-2 complex.                                      |
| Formulation:           | PBS, pH 7.2 with 0.09% Sodium Azide as preservative, 1% BSA and 5% Sucrose.<br>Label: PE<br>State: Lyophilized purified IgG fraction<br>Label: R. Phycoerythrin (RPE)   |
| Reconstitution Method: | Restore with 1.0 ml distilled water.  |
| Purification:          | Affinity Chromatography on Protein G  |
| Conjugation:           | PE  |
| Storage:               | Prior to and Following reconstitution store the antibody undiluted at 2-8°C.<br><b>DO NOT FREEZE!</b><br>This product is photosensitive and should be protected from light.<br>Avoid repeated freezing and thawing. |
| Stability:             | Shelf life: One year from despatch.   |
| Gene Name:             | integrin subunit alpha 2  |
| Database Link:         | <a href="#">Entrez Gene 3673 Human P17301</a>   |



[View online »](#)

**Background:**

Integrins are heterodimeric cell surface receptors composed of alpha and beta subunits, which mediate cell-cell and cell-extracellular matrix attachments. They are responsible for adhesion of platelets and other cells to collagens, modulation of collagen and collagenase gene expression, force generation and organization of newly synthesized extracellular matrix. Aberrant integrin expression has been found in many epithelial tumours. Changes in integrin expression have been shown to be important for the growth and early metastatic capacity of melanoma cells.

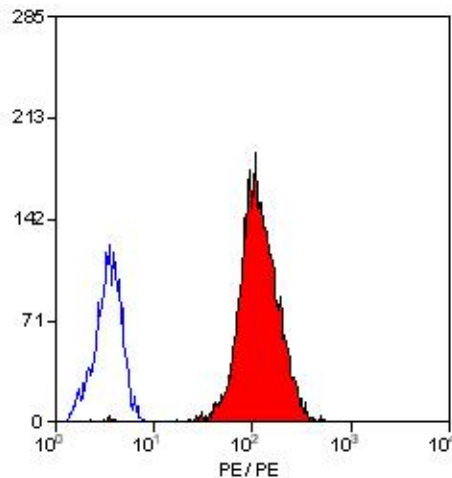
CD49b is a 160kD glycoprotein that non-covalently associates with the 130kD integrin beta 1 subunit to form the VLA-2 complex. CD49b is expressed by platelets, long term cultivated T cells, approximately 50% of monocytes and most adherent cell lines.

**Synonyms:**

Integrin alpha-2, ITGA-2, VLA-2 alpha, VLA2, GPIa, Collagen Receptor

**Note:**

Fusion Partners: Spleen cells from immunised mice were fused with cells of the mouse NS1 myeloma cell line.

**Product images:**

Staining of human peripheral blood platelets with Mouse anti Human CD49b antibody RPE conjugated (SM1125R/RT).