

Product datasheet for **SM1122PS**

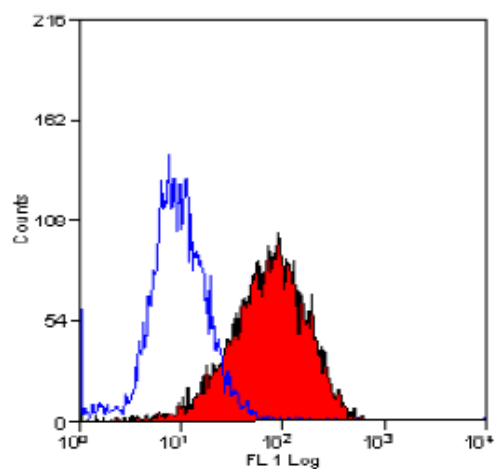
Integrin alpha 1 (ITGA1) Mouse Monoclonal Antibody [Clone ID: TS2/7]

Product data:

Product Type:	Primary Antibodies
Clone Name:	TS2/7
Applications:	FC, IHC, IP
Recommended Dilution:	Flow Cytometry: Use 10 µl of 1/25-1/50 diluted antibody to label 10e6 cells in 100 µl. Immunoprecipitation. Immunohistochemistry on Frozen Sections.
Reactivity:	Human
Host:	Mouse
Isotype:	IgG1
Clonality:	Monoclonal
Specificity:	This antibody recognises the alpha 1 integrin sub-unit, which forms the VLA-1 heterodimer in association with the beta 1 integrin.
Formulation:	PBS, pH 7.4 containing 0.09% Sodium Azide as preservative. State: Purified State: Liquid purified IgG fraction.
Concentration:	lot specific
Purification:	Affinity Chromatography on Protein G
Conjugation:	Unconjugated
Storage:	Store the antibody undiluted at 2-8°C for one month or (in aliquots) at -20°C for longer. Avoid repeated freezing and thawing.
Stability:	Shelf life: one year from despatch.
Gene Name:	integrin subunit alpha 1
Database Link:	Entrez Gene 3672 Human P56199
Background:	VLA-1 is a receptor for collagen and laminin, and is expressed by chronically activated T cells, melanoma cells and smooth muscle cells.
Synonyms:	Integrin alpha-1, ITGA-1, VLA-1, VLA1



[View online »](#)

Product images:

Staining of HeLa cells with MOUSE ANTI HUMAN CD49a (SM1122PS).