

Product datasheet for **SM1121R**

CD48 Mouse Monoclonal Antibody [Clone ID: MEM-102]

Product data:

Product Type:	Primary Antibodies
Clone Name:	MEM-102
Applications:	FC
Recommended Dilution:	Flow Cytometry: Use 10 µl of neat antibody to label 10 ⁶ cells in 100 µl.
Reactivity:	Human
Host:	Mouse
Isotype:	IgG1
Clonality:	Monoclonal
Specificity:	This antibody binds to the 45kD leucocyte surface glycoprotein specific for the CD48 antigen which is closely related to the activation antigen, Blast-1. It is useful in the detection of CD48 positive cells and may be used in studies to differentiate haemopoietic tumours, sarcomas and melanomas.
Formulation:	PBS, pH 7.4 Label: PE State: Lyophilized purified IgG fraction Stabilizer: 1% BSA Preservative: 0.09% Sodium Azide Label: R. Phycoerythrin (RPE)
Reconstitution Method:	Restore with distilled water.
Purification:	Affinity Chromatography on Protein A
Conjugation:	PE
Storage:	Prior to and following reconstitution store the antibody undiluted at 2-8°C. DO NOT FREEZE! This product is photosensitive and should be protected from light.
Stability:	Shelf life: one year from despatch.
Gene Name:	CD48 molecule
Database Link:	Entrez Gene 962 Human P09326



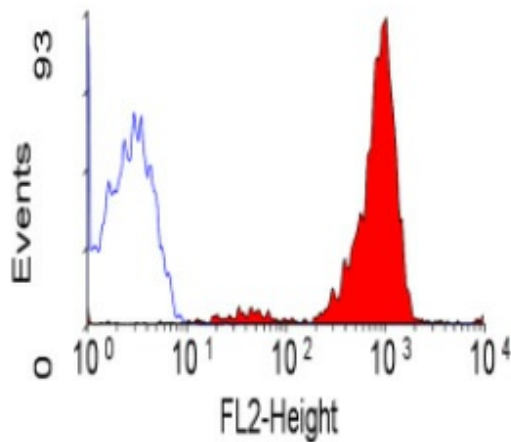
[View online »](#)

Background:

CD48 is a glycosyl phosphatidyl inositol (GPI) anchored cell surface protein also known as Blast1, HuLy m3, BCM1 (in mouse), and OX45 (in rat). CD48 is strongly expressed on lymphocytes and monocytes and weakly on granulocytes but is absent on platelets, fibroblasts, epithelium and endothelium. CD48 is one of the markers for detecting the defects of GPI anchoring structure on patients with paroxysmal nocturnal hemoglobinuria (PNH) and serves as a low affinity ligand for CD2. The CD48 antigen is closely related to the activation antigen, Blast 1.

Synonyms:

BCM1, BLAST1, MEM-102, TCT.1

Product images:

SM1121R/RT staining of human peripheral blood lymphocytes.