

## Product datasheet for **SM1121PS**

### CD48 Mouse Monoclonal Antibody [Clone ID: MEM-102]

#### Product data:

Product Type:	Primary Antibodies
Clone Name:	MEM-102
Applications:	FC, IHC, IP, WB
Recommended Dilution:	<b>Flow cytometry</b> (2 µg/ml). <b>Immunoprecipitation.</b> <b>Western blot.</b> <b>Immunohistochemistry (paraffin sections).</b>
Reactivity:	Human, Primate
Host:	Mouse
Isotype:	IgG1
Clonality:	Monoclonal
Immunogen:	Raji human Burkitt's lymphoma cell line
Specificity:	The antibody reacts with CD48 antigen (Blast-1), a 40-47 kDa GPI-anchored membrane protein (immunoglobulin supergene family) widely expressed on hematopoietic cells; it is negative on granulocytes, platelets and erythrocytes.
Formulation:	Phosphate buffered saline (PBS) with 15 mM sodium azide, approx. pH 7.4 State: Purified State: Liquid Ig fraction
Concentration:	lot specific
Purification:	Protein-A affinity chromatography; purity: > 95% (by SDS-PAGE)
Conjugation:	Unconjugated
Storage:	Store undiluted at 2-8°C. <b>DO NOT FREEZE!</b>
Stability:	Shelf life: one year from despatch.
Gene Name:	CD48 molecule
Database Link:	<a href="#">Entrez Gene 962 Human P09326</a>



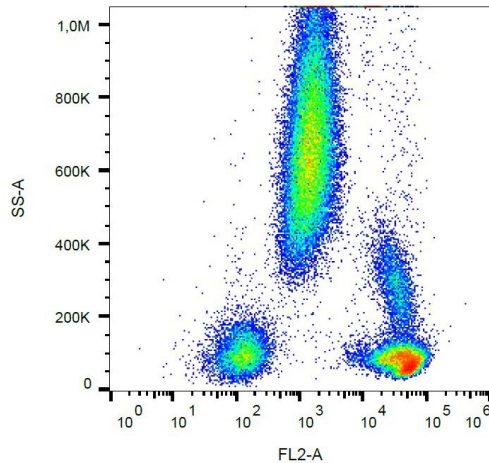
[View online »](#)

**Background:**

CD48 (Blast-1) belongs to the CD2 subset of the Ig superfamily, which includes CD2, CD2F-10, CD58, CD84, CD150, CD229, CD244 and others. These molecules bind to the same or another members of their family, thus mediate homotypic or heterotypic adhesion. CD48 is a GPI-anchored protein broadly expressed on hematopoietic cells and serves as a high affinity ligand for 2B4 and low affinity ligand for CD2. 2B4-CD48 interaction among NK cells and NK-T cells regulates cell proliferation. Signaling through CD48 results in eosinophil activation and CD48 expression is increased in several infectious diseases.

**Synonyms:**

BCM1, BLAST1, MEM-102, TCT.1

**Product images:**

Surface staining of human peripheral blood with anti-CD48 (MEM-102) PE.