

## Product datasheet for **SM1117S**

### CD45 (PTPRC) (CD45RO) Mouse Monoclonal Antibody [Clone ID: UCHL1]

#### Product data:

Product Type:	Primary Antibodies
Clone Name:	UCHL1
Applications:	IHC
Recommended Dilution:	<b>Immunohistochemistry on Frozen Sections.</b> <b>Immunohistochemistry on Formalin-Fixed, Paraffin-Embedded Sections:</b> 1/50-1/100 Pretreatment of deparaffinized tissue with heat-induced epitope retrieval is recommended. Use Polymer anti Mouse/Rabbit IgG as a detection system. <i>Recommended Positive Control:</i> Tonsil or lymph node.
Reactivity:	Human
Host:	Mouse
Isotype:	IgG2a
Clonality:	Monoclonal
Immunogen:	Interleukin-2-dependent Human T lymphocytes.
Specificity:	UCHL-1 reacts with mature activated T cells, most thymocytes, and a sub-population of resting T-cells within both CD4 and CD8 subsets. Shows no reactivity with normal B or natural killer cells, but reacts with granulocytes and monocytes. It rarely stains B cell lymphomas. Cellular Localization: Membranous.
Formulation:	State: Supernatant State: Tissue Culture Supernatant with 0.2% BSA and 15mM Sodium Azide.
Conjugation:	Unconjugated
Storage:	Store the antibody undiluted at 2-8°C.
Stability:	Shelf life: one year from despatch.
Gene Name:	protein tyrosine phosphatase, receptor type C
Database Link:	<a href="#">Entrez Gene 9332 Human</a> <a href="#">Entrez Gene 5788 Human</a> <a href="#">P08575</a>



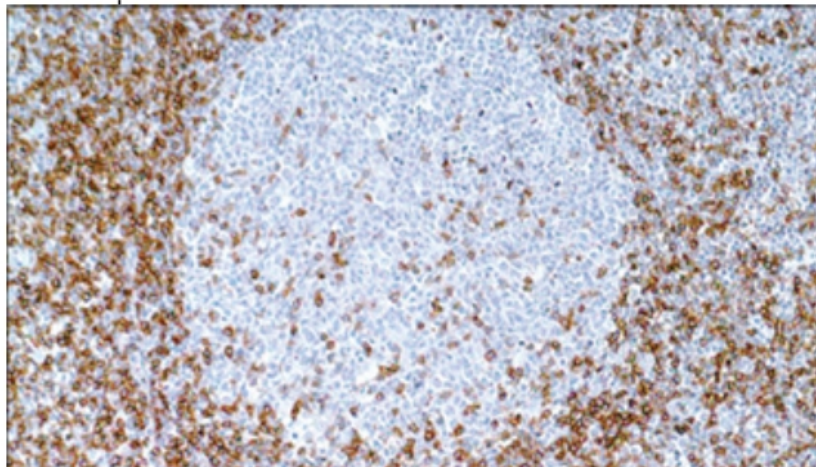
[View online »](#)

**Background:** CD45RO is a single chain transmembrane glycoprotein which represents the low molecular weight isoform of the Leucocyte Common Antigen (LCA). It is expressed on most thymocytes, monocytes, macrophages and granulocytes. It is not expressed on normal B lymphocytes. Intrathymic T cell maturation progresses from CD45RA-/CD45RO+ to CD45RA+/CD45RO-; while peripheral T cell maturation progresses from CD45RA+/CD45RO- to CD45RA-/CD45RO+.

**Synonyms:** PTPRC, Leukocyte common antigen, L-CA, T200

**Protein Families:** Druggable Genome, Secreted Protein, Transmembrane

### Product images:



Formalin-Fixed, Paraffin-Embedded Human lymph node stained with CD45RO antibody Cat.-No. SM1117S using peroxidase conjugate and DAB chromogen. Note cell membrane staining of T lymphocytes.