

Product datasheet for **SM1115APC**

CD45 (PTPRC) (CD45RA) Mouse Monoclonal Antibody [Clone ID: MEM-56]

Product data:

Product Type:	Primary Antibodies
Clone Name:	MEM-56
Applications:	FC
Recommended Dilution:	Flow cytometry (use 20 µl to label 10e cells or 100 µl whole blood).
Reactivity:	Human
Host:	Mouse
Isotype:	IgG2b
Clonality:	Monoclonal
Immunogen:	Human thymocytes and T lymphocytes
Specificity:	The antibody MEM-56 reacts with CD45RA, a 205-220 kDa single chain type I glycoprotein, variant of CD45 (CD45RA isoform). CD45RA is expressed on most of B lymphocytes, resting and native T lymphocytes, medullar thymocytes and monocytes.
Formulation:	Posphate buffered saline (PBS) containing 15 mM sodium azide and 0.2% (w/v) high-grade protease free Bovine Serum Albumin (BSA) as a stabilizing agent. Label: APC State: Liquid purified Ig fraction Label: Conjugated with cross-linked Allophycocyanin under optimum conditions. The conjugate is purified by size-exclusion chromatography and adjusted for direct use
Conjugation:	APC
Storage:	Store the antibody undiluted at 28°C. DO NOT FREEZE! This product is photosensitive and should be protected from light. Should it contain a precipitate we recommend microcentrifugation before use.
Stability:	Shelf life: one year from despatch.
Gene Name:	protein tyrosine phosphatase, receptor type C
Database Link:	Entrez Gene 5788 Human P08575



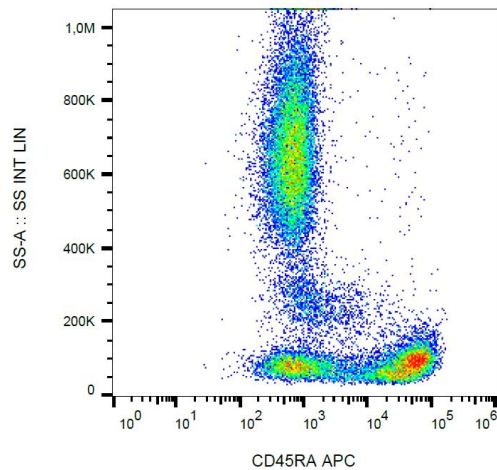
[View online »](#)

Background:

CD45RA is a high molecular weight isoform of a receptor-type protein tyrosine phosphatase, CD45 glycoprotein. CD45 is crucial in lymphocyte development and antigen signaling, serving as an important regulator of Src-family kinases, promotes cell survival by modulating integrin-mediated signal transduction pathway and is also involved in DNA fragmentation during apoptosis. CD45 isoforms differ in their extracellular domains, whereas they share identical transmembrane and cytoplasmic domains. These isoforms differ in their ability to translocate into the glycosphingolipid-enriched membrane domains and their expression depends on cell type and physiological state of the cell. CD45RA is expressed e.g. on nave T cells and normal plasma cells.

Synonyms:

PTPRC, Leukocyte common antigen, L-CA, T200

Product images:

Surface staining of human peripheral blood with anti-CD45RA (MEM-56) APC.