

Product datasheet for **SM1108F**

CD41 (ITGA2B) Mouse Monoclonal Antibody [Clone ID: PM6/248]

Product data:

Product Type:	Primary Antibodies
Clone Name:	PM6/248
Applications:	FC
Recommended Dilution:	Flow Cytometry.
Reactivity:	Human
Host:	Mouse
Isotype:	IgG1
Clonality:	Monoclonal
Immunogen:	Human platelet plasma membrane. Spleen cells from immunised BALB/c mice were fused with cells from the SP2/0 mouse myeloma line.
Specificity:	This antibody recognises the CD41 cell surface antigen. It has not been established if clone PM6/248 recognises free CD41 or CD41 only when complexed with CD61. However, antibody binding is reduced in the presence of EDTA suggesting that the epitope recognised is dependent upon an intact CD41/61 complex.
Formulation:	PBS, pH 7.4 containing 0.09% Sodium Azide as preservative and 1% BSA as stabilizer. Label: FITC State: Liquid purified IgG fraction. Label: Fluorescein Isothiocyanate Isomer 1
Concentration:	lot specific
Purification:	Affinity Chromatography on Protein A.
Conjugation:	FITC
Storage:	Store the antibody undiluted at 2-8°C for one month or (in aliquots) at -20°C for longer. This product is photosensitive and should be protected from light. Avoid repeated freezing and thawing.
Stability:	Shelf life: one year from despatch.
Gene Name:	integrin subunit alpha 2b
Database Link:	Entrez Gene 3674 Human P08514

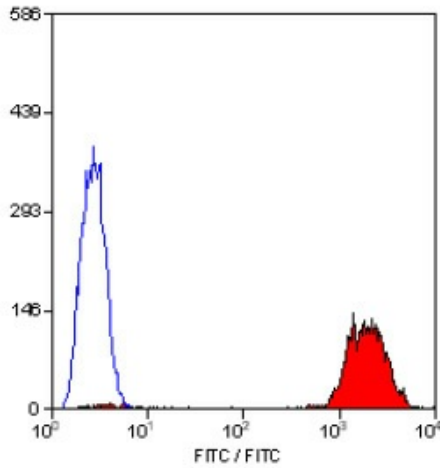


[View online »](#)

Background: CD41 is a 140kD glycoprotein expressed by platelets and megakaryocytes. CD41 is also known as platelet glycoprotein IIb, and functions as a receptor for fibrinogen, fibronectin and vWF.

Synonyms: Integrin alpha-IIb, GP2B, ITGAB, GPalpha IIb

Product images:



Staining of human peripheral blood platelets with Mouse Anti Human CD41-FITC.