

Product datasheet for **SM1106R**

CD38 Mouse Monoclonal Antibody [Clone ID: AT13/5]

Product data:

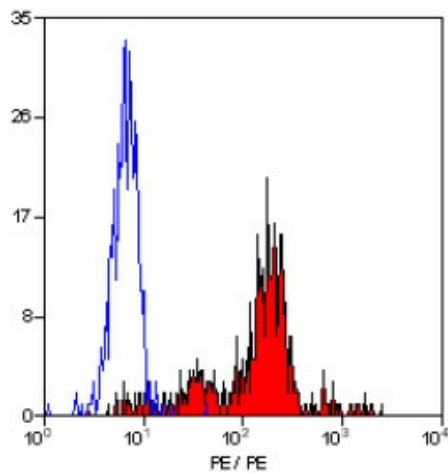
Product Type:	Primary Antibodies
Clone Name:	AT13/5
Applications:	FC
Recommended Dilution:	Flow Cytometry: Use 10 µl of Neat-1/5 diluted antibody to label 10e6 cells in 100 µl.
Reactivity:	Human
Host:	Mouse
Isotype:	IgG1
Clonality:	Monoclonal
Immunogen:	Namalwa cell line. Spleen cells from immunised BALB/c mice were fused with cells of the mouse NS1 myeloma cell line.
Specificity:	This antibody recognises the CD38 cell surface antigen, a 45kD glycoprotein.
Formulation:	PBS containing 0.09% Sodium Azide as preservative and 1% BSA as stabilizer. Label: PE State: Lyophilized purified IgG fraction. Label: R. Phycoerythrin (RPE)
Reconstitution Method:	Restore with distilled water.
Purification:	Affinity chromatography on Protein A
Conjugation:	PE
Storage:	Prior to and following reconstitution store the antibody undiluted at 2-8°C. DO NOT FREEZE! This product is photosensitive and should be protected from light.
Stability:	Shelf life: one year from despatch.
Gene Name:	CD38 molecule
Database Link:	Entrez Gene 952 Human P28907
Background:	CD38 is expressed by plasma cells, monocytes, early lymphoid cells and activated T cells. CD38 is widely used to study the process of T and B cell differentiation and activation. Recently CD38 has been shown to possess ADP-ribosyl cyclase activity.



[View online »](#)

Synonyms: cADPr hydrolase 1, T10

Product images:



Staining of human peripheral blood monocytes with Mouse Anti Human CD38-RPE.