

## Product datasheet for **SM1106B**

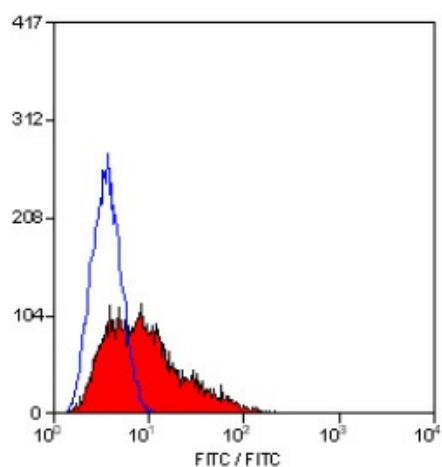
### CD38 Mouse Monoclonal Antibody [Clone ID: AT13/5]

#### Product data:

Product Type:	Primary Antibodies
Clone Name:	AT13/5
Applications:	FC
Recommended Dilution:	Flow cytometry.
Reactivity:	Human
Host:	Mouse
Isotype:	IgG1
Clonality:	Monoclonal
Immunogen:	Spleen cells from immunised BALB/c mice were fused with cells of the mouse NS1 myeloma cell line.
Specificity:	This antibody recognises the CD38 cell surface antigen, a 45kD glycoprotein.
Formulation:	PBS, pH 7.4 containing 0.09% Sodium Azide as preservative and 1% BSA as stabilizer. Label: Biotin State: Liquid purified IgG fraction.
Concentration:	lot specific
Conjugation:	Biotin
Storage:	Store the antibody undiluted at 2-8°C for one month or (in aliquots) at -20°C for longer. Avoid repeated freezing and thawing.
Stability:	Shelf life: one year from despatch.
Gene Name:	CD38 molecule
Database Link:	<a href="#">Entrez Gene 952 Human P28907</a>
Background:	CD38 is expressed by plasma cells, monocytes, early lymphoid cells and activated T cells. CD38 is widely used to study the processes of T and B cell differentiation and activation. Recently CD38 has been shown to possess ADP-ribosyl cyclase activity.
Synonyms:	cADPr hydrolase 1, T10



[View online »](#)

**Product images:**

Staining of human peripheral blood lymphocytes with Mouse Anti Human CD38-Biotin.