

## Product datasheet for **SM1106A**

### CD38 Mouse Monoclonal Antibody [Clone ID: AT13/5]

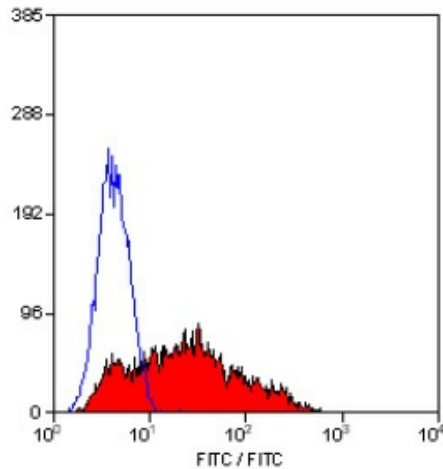
#### Product data:

Product Type:	Primary Antibodies
Clone Name:	AT13/5
Applications:	FC, IHC, IP
Recommended Dilution:	<b>Flow Cytometry:</b> Use 10 µl of 1/100 diluted antibody to label 10 <sup>6</sup> cells in 100 µl. <b>Immunoprecipitation.</b> <b>Immunohistochemistry on Frozen Sections:</b> The epitope recognised by this antibody is reported to be sensitive to Formaldehyde fixation and tissue processing. We recommend the use of acetone fixation for frozen sections.
Reactivity:	Human
Host:	Mouse
Isotype:	IgG1
Clonality:	Monoclonal
Immunogen:	Namalwa Human B-cell line. Spleen cells from immunised BALB/c mice were fused with cells of the mouse NS1 myeloma cell line.
Specificity:	This antibody recognizes a 45kD glycoprotein and has a reactivity pattern consistent with antibodies of the CD38 cluster.
Formulation:	PBS State: Azide Free State: Liquid purified IgG fraction Stabilizer: None Preservative: None
Concentration:	lot specific
Purification:	Affinity Chromatography on Protein G
Conjugation:	Unconjugated
Storage:	Upon receipt, store undiluted (in aliquots) at -20°C. Avoid repeated freezing and thawing.
Stability:	Shelf life: one year from despatch.



[View online »](#)

Gene Name:	CD38 molecule
Database Link:	<a href="#">Entrez Gene 952 Human P28907</a>
Background:	CD38 is expressed by plasma cells, monocytes, early lymphoid cells and activated T cells. CD38 is widely used to study the processes of B and T differentiation and activation. Recently CD38 has been shown to possess ADP-ribosyl cyclase activity.
Synonyms:	cADPr hydrolase 1, T10

**Product images:**

Staining of human peripheral blood monocytes with Mouse Anti Human CD38-Azide Free.