

## Product datasheet for **SM1105R**

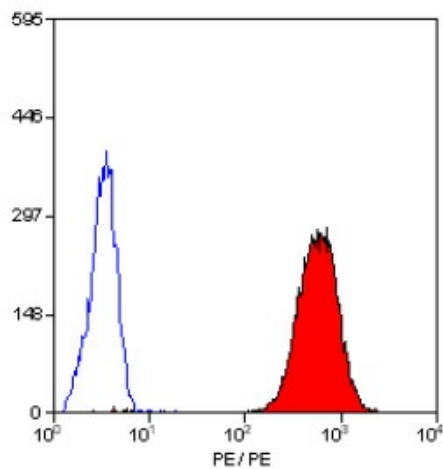
### CD42b / GPIbA Mouse Monoclonal Antibody [Clone ID: AK2]

#### Product data:

Product Type:	Primary Antibodies
Clone Name:	AK2
Applications:	FC
Recommended Dilution:	Flow Cytometry.
Reactivity:	Human
Host:	Mouse
Isotype:	IgG1
Clonality:	Monoclonal
Specificity:	This antibody recognises the CD42b cell surface antigen, also known as platelet glycoprotein GP1B. Clone AK2 has been reported to block the binding of von Willebrand Factor (VWF) to platelets. We recommend the use of SM1105A for this purpose.
Formulation:	PBS, pH 7.4 containing 0.09% Sodium Azide as preservative and 1% BSA as stabilizer. Label: PE State: Lyophilized purified IgG fraction. Label: R. Phycoerythrin (RPE)
Reconstitution Method:	Restore with distilled water.
Purification:	Affinity chromatography on Protein G
Conjugation:	PE
Storage:	Prior to and following reconstitution store the antibody undiluted at 2-8°C. <b>DO NOT FREEZE!</b> This product is photosensitive and should be protected from light.
Stability:	Shelf life: one year from despatch.
Gene Name:	glycoprotein Ib platelet alpha subunit
Database Link:	<a href="#">Entrez Gene 2811 Human P07359</a>
Background:	CD42b is expressed by platelets and megakaryocytes.
Synonyms:	Platelet glycoprotein Ib alpha chain, Glycoprotein Ibalpha, GP-Ib alpha, GPIb-alpha



[View online »](#)

**Product images:**

Staining of human peripheral blood platelets with Mouse Anti Human CD42b-RPE (SM1105R/RT).