

## Product datasheet for **SM1104R**

### CD42a (GP9) Mouse Monoclonal Antibody [Clone ID: GRP-P]

#### Product data:

Product Type:	Primary Antibodies
Clone Name:	GRP-P
Applications:	FC
Recommended Dilution:	<b>Flow Cytometry.</b>
Reactivity:	Canine, Human, Mink
Host:	Mouse
Isotype:	IgG1
Clonality:	Monoclonal
Immunogen:	Human red blood cells and platelets. Spleen cells from immunised BALB/c mice were fused with cells of the mouse NS1 myeloma cell line.
Specificity:	The mouse monoclonal antibody GR-P (also known as GRP-P) recognizes CD42a (glycoprotein 9), a 22 kDa transmembrane protein constitutively expressed on megakaryocytes and platelets. HLDA IV.; WS Code P 35.
Formulation:	PBS, pH~7.4 Label: PE State: Lyophilized purified IgG fraction Stabilizer: 1% BSA, 5% Sucrose Preservative: 0.09% Sodium Azide Label: R. Phycoerythrin (RPE)
Reconstitution Method:	Restore with 1 ml distilled water
Purification:	Ion Exchange Chromatography
Conjugation:	PE
Storage:	Prior to and following reconstitution store the antibody at 2-8°C. <b>DO NOT FREEZE!</b> This product is photosensitive and should be protected from light.
Stability:	Shelf life: one year from despatch.



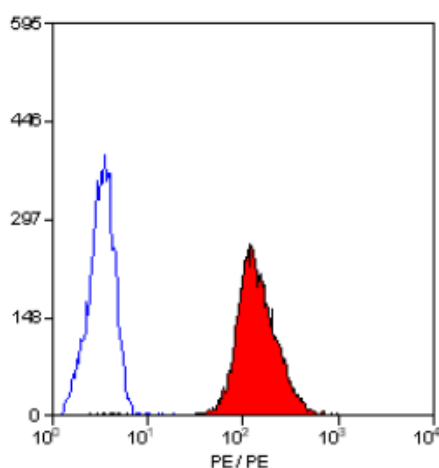
[View online »](#)

**Database Link:** [Entrez Gene 2815 Human P14770](#)

**Background:** CD42a, also known as Glycoprotein 9 (GPIX), composes together with GPIb alpha, GPIb beta and GPV the GPIb-IX-V receptor complex critical in the process of platelet-rich thrombus formation by tethering the platelet to a thrombogenic surface. CD42b binds to von Willebrand factor (VWF) exposed at a site of vascular injury, as well as to thrombin, coagulation factors XI and XII, high molecular weight kininogen, TSP-1, integrin Mac-1 and Pselectin. Defects in the gene encoding CD42a are a cause of Bernard-Soulier syndrome, also known as giant platelet disease. These patients have unusually large platelets and have a clinical bleeding tendency.

**Synonyms:** Platelet glycoprotein IX, GP-IX, GP9

**Product images:**



Staining of human peripheral blood platelets with  
MOUSE ANTI HUMAN CD42a:RPE