

Product datasheet for **SM1103P**

CD33 Mouse Monoclonal Antibody [Clone ID: WM53]

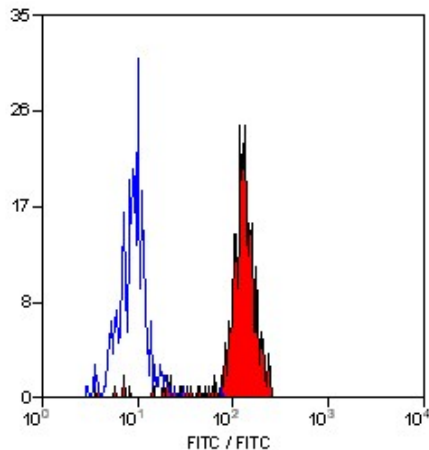
Product data:

Product Type:	Primary Antibodies
Clone Name:	WM53
Applications:	FC, IHC, IP, WB
Recommended Dilution:	Flow Cytometry: Use 10 µl of 1/10-1/50 diluted antibody to label 10e6 cells. Western blot. Immunoprecipitation. Immunohistochemistry on Frozen Sections: 1/50-1/100 (Overnight incubation recommended). The epitope recognized by this antibody is reported to be sensitive to formaldehyde fixation and tissue processing. We recommends the use of acetone fixation for frozen sections. Positive Control Tissue: Lymphatic tissue. Not suitable on Paraffin Embedded Sections.
Reactivity:	Human
Host:	Mouse
Isotype:	IgG1
Clonality:	Monoclonal
Immunogen:	Human AML cells. Spleen cells from immunised BALB/c mice were fused with cells of the mouse NS1 myeloma cell line.
Specificity:	Recognizes the CD33 cell surface glycoprotein, a 67kD molecule expressed by monocytes, granulocyte precursors, myeloid progenitor cells and myeloid leukaemias.
Formulation:	PBS, pH 7.4 State: Purified State: Liquid purified IgG fraction from Tissue Culture Supernatant Preservative: 0.09% Sodium Azide
Concentration:	lot specific
Purification:	Affinity Chromatography on Protein G
Conjugation:	Unconjugated



[View online »](#)

Storage:	Store undiluted at 2-8°C for one month or (in aliquots) at -20°C for longer. Avoid repeated freezing and thawing.
Stability:	Shelf life: one year from despatch.
Gene Name:	CD33 molecule
Database Link:	Entrez Gene 945 Human P20138
Background:	CD33 is found on granulocyte and macrophage precursors in the bone marrow, but is not on pluripotent stem cells. The protein is also expressed on, and is a useful marker for, peripheral monocytes. It is also useful for distinguishing myelogenous leukaemia cells from lymphoid or erythroid leukaemias.
Synonyms:	Siglec-3, gp67

Product images:

Staining of human peripheral blood monocytes with Mouse anti Human CD33 antibody (/PS/PT).