

## Product datasheet for **SM1103APC**

### CD33 Mouse Monoclonal Antibody [Clone ID: WM53]

#### Product data:

Product Type:	Primary Antibodies
Clone Name:	WM53
Applications:	FC
Recommended Dilution:	Flow Cytometry: Use 10µl of Neat-1/10 diluted antibody to label 10e6 cells in 100 µl.
Reactivity:	Human
Host:	Mouse
Isotype:	IgG1
Clonality:	Monoclonal
Immunogen:	Human AML cells. Spleen cells from immunised BALB/c mice were fused with cells of the mouse NSI myeloma cell line.
Specificity:	This antibody recognises the CD33 cell surface glycoprotein.
Formulation:	PBS, pH 7.4 containing 0.09% Sodium Azide as preservative and 1% BSA as stabilizer. Label: APC State: Lyophilized purified IgG fraction. Label: Allophycocyanin
Reconstitution Method:	Restore with distilled water.
Purification:	Affinity Chromatography on Protein G.
Conjugation:	APC
Storage:	Prior to and following reconstitution store the antibody undiluted at 2-8°C. <b>DO NOT FREEZE!</b> This product is photosensitive and should be protected from light.
Stability:	Shelf life: one year from despatch.
Gene Name:	CD33 molecule
Database Link:	<a href="#">Entrez Gene 945 Human P20138</a>



[View online »](#)

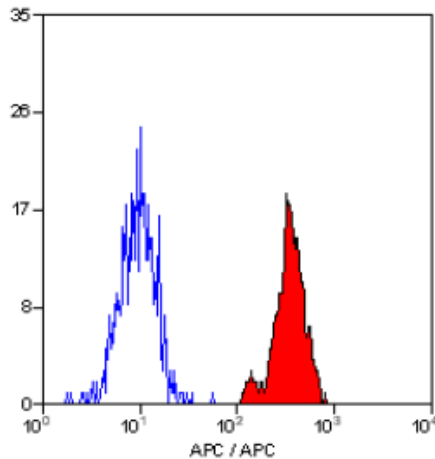
**Background:**

CD33 is found on granulocyte and macrophage precursors in the bone marrow, but is not on pluripotent stem cells. The protein is also expressed on, and is a useful marker for, peripheral monocytes. It is also useful for distinguishing myelogenous leukaemia cells from lymphoid or erythroid leukaemias.

Identification of human Monocytes (bright) and Granulocytes (dim) expressing the 67kDa M.W. surface antigen. CD33 is a 67kD molecule expressed by monocytes, granulocyte precursors, myeloid progenitor cells and myeloid leukaemias.

**Synonyms:**

Siglec-3, gp67

**Product images:**

Staining of human peripheral blood monocytes with Mouse Anti Human CD33 antibody -APC