

## Product datasheet for **SM1102R**

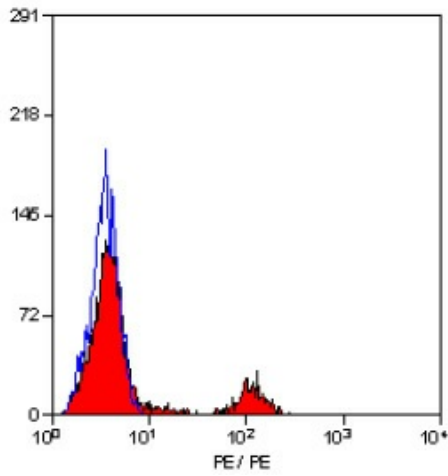
### CD40 Mouse Monoclonal Antibody [Clone ID: LOB7/6]

#### Product data:

Product Type:	Primary Antibodies
Clone Name:	LOB7/6
Applications:	FC
Recommended Dilution:	Flow Cytometry.
Reactivity:	Canine, Human
Host:	Mouse
Isotype:	IgG1
Clonality:	Monoclonal
Immunogen:	Spleen cells from immunised BALB/c mice were fused with cells of the mouse NS1 myeloma cell line.
Specificity:	This antibody recognises the CD40 cell surface antigen.
Formulation:	PBS, pH 7.4 containing 0.09% Sodium Azide as preservative and 1% BSA as stabilizer. Label: PE State: Lyophilized purified IgG fraction. Label: R. Phycoerythrin (RPE)
Reconstitution Method:	Restore with distilled water.
Conjugation:	PE
Storage:	Prior to and following reconstitution store the antibody undiluted at 2-8°C. <b>DO NOT FREEZE!</b> This product is photosensitive and should be protected from light.
Stability:	Shelf life: one year from despatch.
Gene Name:	CD40 molecule
Database Link:	<a href="#">Entrez Gene 958 Human P25942</a>
Background:	CD40 is a 48kD glycoprotein expressed by B lymphocytes and weakly by some monocytes. CD40 is involved in the process of B cell selection in germinal centres, and is vital in T cell-B cell interactions.
Synonyms:	TNFRSF5, CDw40, Bp50



[View online »](#)

**Product images:**

Staining of human peripheral blood lymphocytes  
with Mouse Anti Human CD40-RPE