

Product datasheet for **SM1102PT**

CD40 Mouse Monoclonal Antibody [Clone ID: LOB7/6]

Product data:

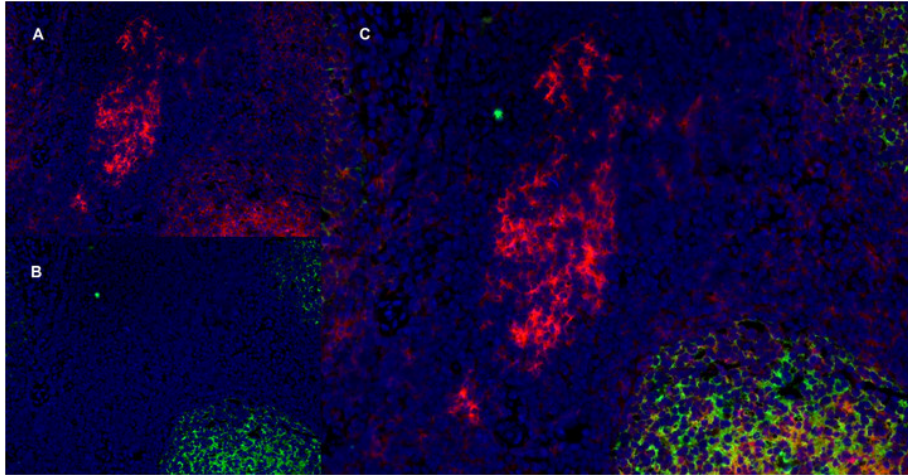
Product Type:	Primary Antibodies
Clone Name:	LOB7/6
Applications:	FC, IF, IHC, IP
Recommended Dilution:	Flow Cytometry: Use 10 µl of 20 µg/ml diluted antibody to label 10 ⁶ cells in 100 µl. Immunohistochemistry on Frozen sections: 1-10 mg/ml. Immunohistochemistry on Paraffin sections: 1-10 µg/ml. This product requires protein digestion pre-treatment of paraffin embedded sections prior to staining eg. pronase or trypsin. Recommended Positive Control: Human Tonsil. Immunoprecipitation.
Reactivity:	Canine, Human
Host:	Mouse
Isotype:	IgG2a
Clonality:	Monoclonal
Immunogen:	CD40 Ig(Fc) fusion protein containing the EC region of human CD40 and Fc region of Human IgG. Spleen cells from immunised BALB/c mice were fused with cells of the mouse NS1 myeloma cell line.
Specificity:	This antibody Clone LOB7/6 recognizes the CD40 cell surface antigen.
Formulation:	Tris buffered saline containing 0.09% Sodium Azide as preservative State: Purified State: Liquid purified IgG fraction
Concentration:	lot specific
Purification:	Affinity Chromatography on Protein A
Conjugation:	Unconjugated
Storage:	Store undiluted at 2-8°C for one month or (in aliquots) at -20°C for longer. Avoid repeated freezing and thawing.
Stability:	Shelf life: one year from despatch.



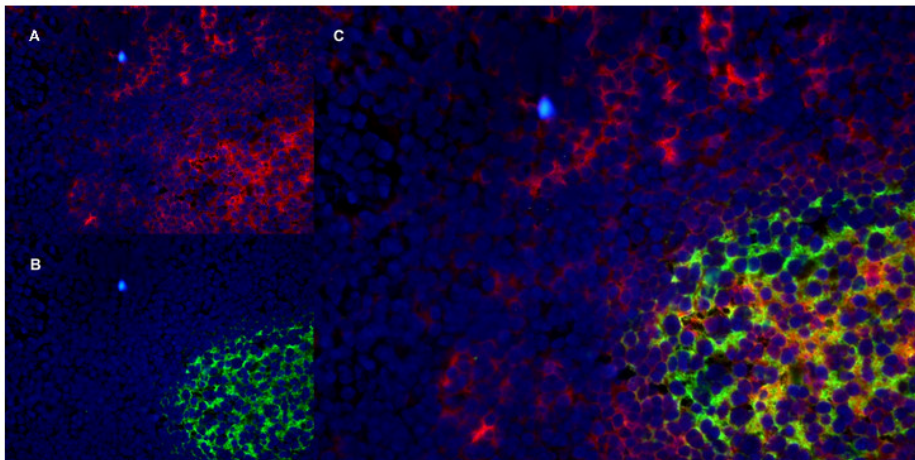
[View online »](#)

Gene Name:	CD40 molecule
Database Link:	Entrez Gene 958 Human P25942
Background:	CD40 is a 48kD glycoprotein expressed by B lymphocytes and weakly by some monocytes. CD40 is involved in the process of B cell selection in germinal centres, and is vital in T cell-B cell interactions.
Synonyms:	TNFRSF5, CDw40, Bp50

Product images:



Immunofluorescence staining of a human tonsil cryostat section with Mouse anti Human CD40 antibody, clone LOB7/6, red in A and Mouse anti Human CD21 antibody, clone LB21, green in B. The merged image is C with nuclei counterstained blue using DAPI. Medium power.



Immunofluorescence staining of a human tonsil cryostat section with Mouse anti Human CD40 antibody, clone LOB7/6, red in A and Mouse anti Human CD21 antibody, clone LB21, green in B. The merged image is C with nuclei counterstained blue using DAPI. High power.