

## Product datasheet for **SM1102F**

### CD40 Mouse Monoclonal Antibody [Clone ID: LOB7/6]

#### Product data:

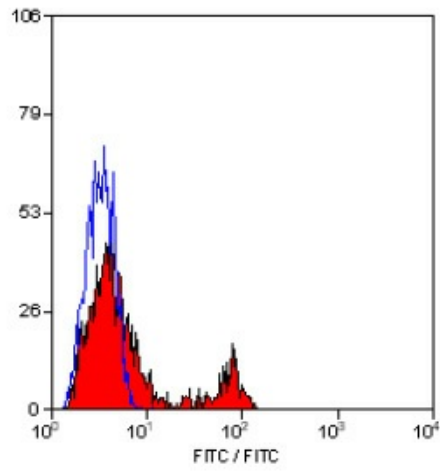
Product Type:	Primary Antibodies
Clone Name:	LOB7/6
Applications:	FC
Recommended Dilution:	Flow Cytometry.
Reactivity:	Canine, Human
Host:	Mouse
Isotype:	IgG1
Clonality:	Monoclonal
Immunogen:	Spleen cells from immunised BALB/c mice were fused with cells of the mouse NS1 myeloma cell line.
Specificity:	This antibody recognises the CD40 cell surface antigen.
Formulation:	PBS, pH 7.4 containing 0.09% Sodium Azide as preservative and 1% BSA as stabilizer. Label: FITC State: Liquid purified IgG fraction. Label: Fluorescein Isothiocyanate Isomer 1
Concentration:	lot specific
Purification:	Affinity chromatography on Protein A
Conjugation:	FITC
Storage:	Store the antibody undiluted at 2-8°C for one month or (in aliquots) at -20°C for longer. This product is photosensitive and should be protected from light. Avoid repeated freezing and thawing.
Stability:	Shelf life: one year from despatch.
Gene Name:	CD40 molecule
Database Link:	<a href="#">Entrez Gene 958 Human P25942</a>
Background:	CD40 is a 48kD glycoprotein expressed by B lymphocytes and weakly by some monocytes. CD40 is involved in the process of B cell selection in germinal centres, and is vital in T cell-B cell interactions.



[View online »](#)

Synonyms: TNFRSF5, CDw40, Bp50

### Product images:



Staining of human peripheral blood lymphocytes with Mouse Anti Human CD40-FITC