

## Product datasheet for **SM1101F**

### CD39 (ENTPD1) Mouse Monoclonal Antibody [Clone ID: A1]

#### Product data:

Product Type:	Primary Antibodies
Clone Name:	A1
Applications:	FC
Recommended Dilution:	<b>Flow Cytometry:</b> Use 10 µl of neat antibody to label 10e6 cells or 100 µl whole blood.
Reactivity:	Human
Host:	Mouse
Isotype:	IgG1
Clonality:	Monoclonal
Immunogen:	PHA activated human lymphocytes. Spleen cells from immunised BALB/c mice were fused with cells of the mouse NS1 myeloma cell line.
Specificity:	This antibody binds to the Human CD39 cell surface antigen. This antibody has been shown to block MHC independent target cell recognition by hapten-specific CTL. SM1101A is recommended for this purpose.
Formulation:	PBS, pH 7.4 containing 0.09% Sodium Azide as preservative and 1% BSA as stabilizer. Label: FITC State: Liquid purified IgG fraction. Label: Fluorescein Isothiocyanate Isomer 1
Concentration:	lot specific
Purification:	Affinity Chromatography on Protein G.
Conjugation:	FITC
Storage:	Store the antibody undiluted at 2-8°C for one month or (in aliquots) at -20°C for longer. This product is photosensitive and should be protected from light. Avoid repeated freezing and thawing.
Stability:	Shelf life: one year from despatch.
Gene Name:	ectonucleoside triphosphate diphosphohydrolase 1
Database Link:	<a href="#">Entrez Gene 953 Human P49961</a>

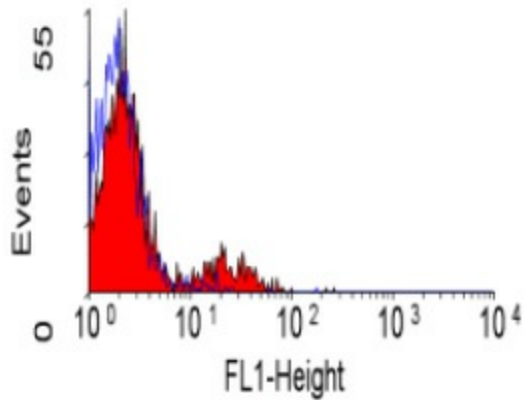


[View online »](#)

**Background:** CD39 is an 80kD molecule expressed on peripheral blood B cells, monocytes and T cell clones. CD39 is also weakly expressed on granulocytes. CD39 has intrinsic ecto-ATPase activity. Expression of CD39 is induced on T cells and increased on B cells as a late activation antigen.

**Synonyms:** NTPDase 1, Ecto-apyrase, ATPDase

**Product images:**



Staining of human peripheral blood lymphocytes with antibody.