

## Product datasheet for **SM1100-05**

### CD23 Mouse Monoclonal Antibody [Clone ID: 1B12]

#### Product data:

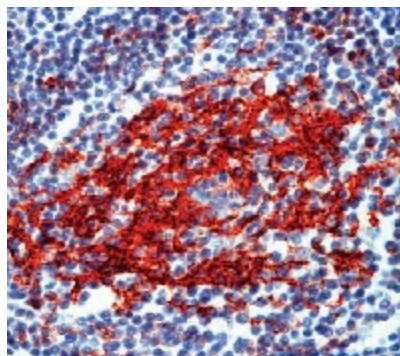
Product Type:	Primary Antibodies
Clone Name:	1B12
Applications:	IHC
Recommended Dilution:	Immunohistochemistry on formalin-fixed paraffin embedded sections: diluted of 1:10 to 1:20 in an ABC method (60 minutes at room temperature) Recommended Positive Control: Tonsil
Reactivity:	Human
Host:	Mouse
Isotype:	IgG1
Clonality:	Monoclonal
Immunogen:	Prokaryotic recombinant fusion protein corresponding to the external domain of the CD23 molecule.
Specificity:	This antibody is specific to a membrane glycoprotein of 45 KD, designated as CD23. CD23 is found on a subpopulation of peripheral blood cells, B lymphocytes and on EBV transformed B lymphoblastoid cell lines. Cellular Localization: Cell membrane
Formulation:	10 mM citrate buffer, pH 6.0 - containing sodium azide as preservative. State: Supernatant State: Liquid tissue culture supernatant
Conjugation:	Unconjugated
Storage:	Store the antibody undiluted at 2-8°C for one month or (in aliquots) at -20°C for longer. Avoid repeated freezing and thawing.
Stability:	Shelf life: one year from despatch.
Gene Name:	Fc fragment of IgE receptor II
Database Link:	<a href="#">Entrez Gene 2208 Human P06734</a>
Background:	Expression of CD23 has been detected in neoplastic cells from cases of B cell chronic lymphocytic leukemias.



[View online »](#)

Synonyms: Fc-epsilon-RII, FCER2, CD23A, FCE2, IGEBF

**Product images:**



Formalin fixed paraffin embedded human tonsil stained with CD23, B cell antibody. [SM1100]