

Product datasheet for **SM1097RT**

CD35 (CR1) Mouse Monoclonal Antibody [Clone ID: E11]

Product data:

Product Type:	Primary Antibodies
Clone Name:	E11
Applications:	FC
Recommended Dilution:	Flow Cytometry.
Reactivity:	Human, Monkey
Host:	Mouse
Isotype:	IgG1
Clonality:	Monoclonal
Immunogen:	Human acute monocytic leukaemia cells. Spleen cells from immunised BALB/c mice were fused with cells of the mouse NS1 myeloma cell line.
Specificity:	This antibody is specific for CD35.
Formulation:	PBS, pH 7.2 containing 0.09% Sodium Azide as preservative, 1% BSA as stabilizer and Inert Bulking Reagent. Label: PE State: Lyophilized purified IgG fraction. Label: R. Phycoerythrin (RPE)
Reconstitution Method:	Restore with distilled water. Care should be taken during reconstitution as the protein may appear as a film at the bottom of the vial. We recommend that the vial is gently mixed after reconstitution.
Purification:	Affinity chromatography on Protein A.
Conjugation:	PE
Storage:	Store the antibody undiluted at 2-8°C. DO NOT FREEZE! This product is photosensitive and should be protected from light.
Stability:	Shelf life: one year from despatch.
Gene Name:	complement component 3b/4b receptor 1 (Knops blood group)



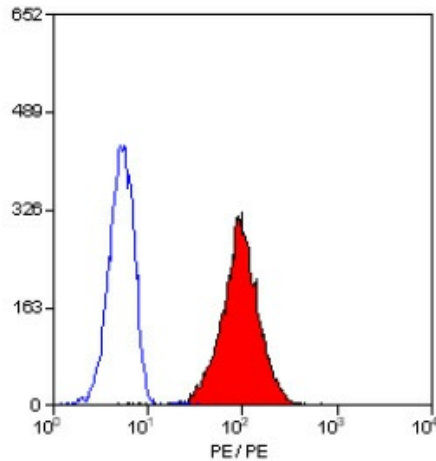
[View online »](#)

Database Link: [Entrez Gene 1378 Human P17927](#)

Background: CD35 is a single chain cell surface glycoprotein which exists in four allotypic forms (A,B,C,D) of 190kD, 220kD, 160kD and 250kD respectively. The molecule is expressed by granulocytes, monocytes, B cells and some T cells. Functionally CD35 acts as a receptor for the C3b component of complement.

Synonyms: Complement receptor type 1, CR1, C3b/C4b receptor

Product images:



Staining of human peripheral blood granulocytes with Mouse Anti Human CD35-RPE.