

Product datasheet for **SM1097P**

CD35 (CR1) Mouse Monoclonal Antibody [Clone ID: E11]

Product data:

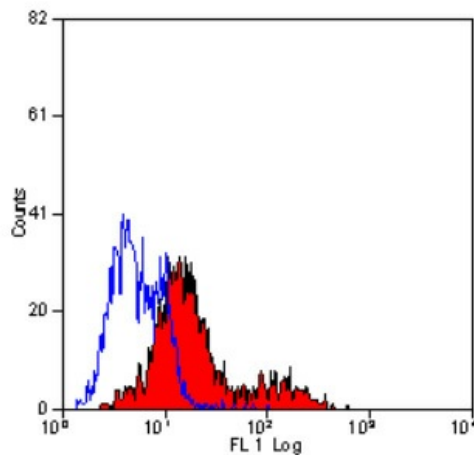
Product Type:	Primary Antibodies
Clone Name:	E11
Applications:	FC, IHC, WB
Recommended Dilution:	<p>Flow Cytometry: Use 10 µl of 1/50-1/200 diluted antibody to label 10⁶ cells or 100 µl whole blood.</p> <p>Immunohistochemistry on Frozen Section: 1-10 µg/ml.</p> <p>Immunohistochemistry on Paraffin Section: 1-10 µg/ml.</p> <p>Requires antigen retrieval using heat treatment prior to staining of Paraffin sections. Sodium citrate buffer pH6.0 is recommended for this purpose.</p> <p>Recommended Positive Control: Human Tonsil.</p> <p>Western Blotting (Ref.3).</p>
Reactivity:	Human, Monkey, Baboon
Host:	Mouse
Isotype:	IgG1
Clonality:	Monoclonal
Immunogen:	<p>Human acute monocytic leukaemia cells.</p> <p>Spleen cells from immunised BALB/c mice were fused with cells of the mouse NS1 myeloma cell line.</p>
Specificity:	This antibody is specific for CD35, a single chain cell surface glycoprotein which exists in four allotypic forms (A,B,C,D) of 190kD, 220kD, 160kD and 250kD respectively.
Formulation:	<p>PBS</p> <p>State: Purified</p> <p>State: Liquid purified IgG fraction from Tissue Culture Supernatant</p> <p>Preservative: 0.09% Sodium Azide</p>
Concentration:	lot specific
Purification:	Affinity Chromatography on Protein A
Conjugation:	Unconjugated
Storage:	<p>Store undiluted at 2-8°C for one month or (in aliquots) at -20°C for longer.</p> <p>Avoid repeated freezing and thawing.</p>



[View online »](#)

Stability:	Shelf life: one year from despatch.
Gene Name:	complement component 3b/4b receptor 1 (Knops blood group)
Database Link:	Entrez Gene 1378 Human P17927
Background:	CD35 is a single chain cell surface glycoprotein which exists in four allotypic forms (A,B,C,D) of 190kD, 220kD, 160kD and 250kD respectively. The molecule is expressed by granulocytes, monocytes, B cells and some T cells. Functionally CD35 acts as a receptor for the C3b component of complement.
Synonyms:	Complement receptor type 1, CR1, C3b/C4b receptor

Product images:



Staining of Human peripheral blood lymphocytes with Mouse anti Human CD35 Antibody (Clone E11).