

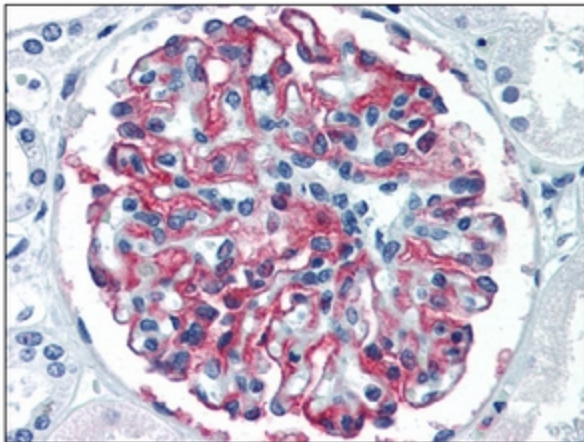
## Product datasheet for **SM1097A**

### CD35 (CR1) Mouse Monoclonal Antibody [Clone ID: E11]

#### Product data:

Product Type:	Primary Antibodies
Clone Name:	E11
Applications:	FC, IHC, WB
Reactivity:	Human, Monkey
Host:	Mouse
Isotype:	IgG1
Clonality:	Monoclonal
Formulation:	State: Azide Free
Conjugation:	Unconjugated
Gene Name:	complement component 3b/4b receptor 1 (Knops blood group)
Database Link:	<a href="#">Entrez Gene 1378 Human P17927</a>
Synonyms:	Complement receptor type 1, CR1, C3b/C4b receptor

#### Product images:



Formalin-Fixed, Paraffin-Embedded Human Kidney stained with Azide Free CR1 Antibody (Clone E11) 10 ug/ml after heat-induced antigen retrieval.



[View online »](#)