

## Product datasheet for **SM1092RT**

### CD32A (FCGR2A) Mouse Monoclonal Antibody [Clone ID: AT10]

#### Product data:

Product Type:	Primary Antibodies
Clone Name:	AT10
Applications:	FC
Recommended Dilution:	<b>Flow cytometry:</b> Use 10µl of neat antibody to label 10 <sup>6</sup> cells or 100 µl whole blood.
Reactivity:	Canine, Human, Monkey
Host:	Mouse
Isotype:	IgG1
Clonality:	Monoclonal
Immunogen:	K562 cell line. Spleen cells from immunised BALB/c mice were fused with cells of the mouse NS1 myeloma cell line.
Specificity:	This antibody recognizes the Human CD32 antigen. Clone <i>AT10</i> blocks the binding of IgG to Fc gamma R11 (See Larsson, M. et al. for details). SM1092LE is recommended for this purpose.
Formulation:	PBS Label: PE State: Lyophilized purified IgG fraction Stabilizer: 1% BSA, 5% sucrose Preservative: 0.09% Sodium Azide Label: R. Phycoerythrin (RPE)
Reconstitution Method:	SM1092R: Restore with 1.0 ml distilled water. SM1092RT: Restore with 0.25 ml distilled water.
Purification:	Affinity Chromatography on Protein A
Conjugation:	PE
Storage:	Store the antibody undiluted at 2-8°C. <b>DO NOT FREEZE!</b> This product is photosensitive and should be protected from light.
Stability:	Shelf life: one year from despatch.



[View online »](#)

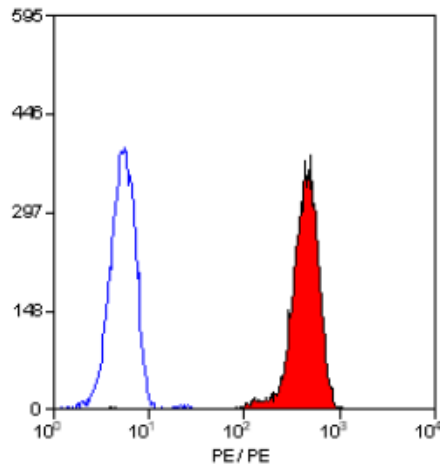
**Gene Name:** Fc fragment of IgG receptor IIa

**Database Link:** [Entrez Gene 2212 Human P12318](#)

**Background:** CD32 is a 40kD glycoprotein that acts as a low affinity receptor for IgG (also known as Fc gamma RII). The antigen mediates several functions including endocytosis, activation of secretion, cytotoxicity and immunomodulation. CD32 is expressed by B cells, monocytes, granulocytes and platelets.

**Synonyms:** Fc-gamma RII-a, Fc-gamma-RIIa, CDw32, FCGR2A, FCG2, FCGR2A1, IGFR2

### Product images:



Staining of human peripheral blood granulocytes with MOUSE ANTI HUMAN CD32:RPE (SM1092R).