

Product datasheet for **SM1092PT**

CD32A (FCGR2A) Mouse Monoclonal Antibody [Clone ID: AT10]

Product data:

Product Type:	Primary Antibodies
Clone Name:	AT10
Applications:	FC, IHC, IP
Recommended Dilution:	Immunoprecipitation: 20 µg/ml. Flow Cytometry: Use 10 µl of 20 µg/ml diluted antibody to label 10e6 cells or 100 µl whole blood. Immunohistochemistry on Frozen Sections: 1/500-1/1000, not suitable for paraffin sections. The epitope recognised by this antibody is reported to be sensitive to formaldehyde fixation and tissue processing. It is recommended to use acetone fixation for frozen sections. <i>Recommended Positive Control:</i> Lymph node.
Reactivity:	Canine, Human, Monkey, Porcine
Host:	Mouse
Isotype:	IgG1
Clonality:	Monoclonal
Immunogen:	K562 cell line.
Specificity:	This antibody recognises the CD32 antigen. Clone AT10 blocks the binding of IgG to Fc gamma R11. SM1092LE is recommended for this purpose.
Formulation:	PBS containing 0.09% Sodium Azide as preservative. State: Purified State: Liquid purified IgG fraction.
Concentration:	lot specific
Purification:	Affinity Chromatography on Protein A.
Conjugation:	Unconjugated
Storage:	Store the antibody undiluted at 2-8°C for one month or (in aliquots) at -20°C for longer. Avoid repeated freezing and thawing.
Stability:	Shelf life: one year from despatch.



[View online »](#)

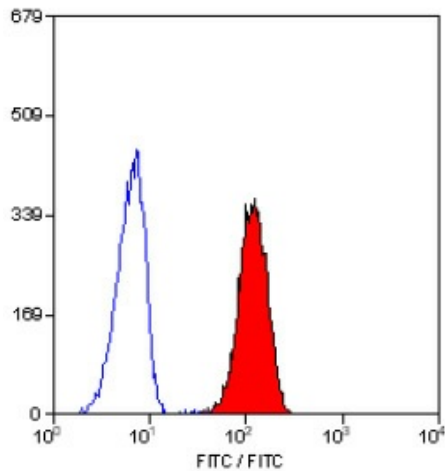
Gene Name: Fc fragment of IgG receptor IIa

Database Link: [Entrez Gene 2212 Human P12318](#)

Background: CD32 is a 40kD glycoprotein that acts as a low affinity receptor for IgG (also known as Fc gamma RII). The antigen mediates several functions including endocytosis, activation of secretion, cytotoxicity and immunomodulation. CD32 is expressed by B cells, monocytes, granulocytes and platelets.

Synonyms: Fc-gamma RII-a, Fc-gamma-RIIa, CDw32, FCGR2A, FCG2, FCGR2A1, IGFR2

Product images:



Staining of human peripheral blood granulocytes with MOUSE ANTI HUMAN CD32.