

Product datasheet for **SM1092FT**

CD32A (FCGR2A) Mouse Monoclonal Antibody [Clone ID: AT10]

Product data:

| | |
|-----------------------|--|
| Product Type: | Primary Antibodies |
| Clone Name: | AT10 |
| Applications: | FC |
| Recommended Dilution: | Flow Cytometry: Use 10 µl of neat-1/10 diluted antibody to label 10e6 cells or 100 µl whole blood. |
| Reactivity: | Canine, Human, Monkey |
| Host: | Mouse |
| Isotype: | IgG1 |
| Clonality: | Monoclonal |
| Immunogen: | K562 cell line. |
| Specificity: | The antibody recognizes the Human CD32 antigen. Clone <i>AT10</i> blocks the binding of IgG to Fc gamma R11 (See Ref. 4). The use of SM1092LE is recommended for this purpose. |
| Formulation: | PBS, pH 7.4 containing 0.09% Sodium Azide as preservative and 1% BSA as stabilizer. Label: FITC State: Liquid purified IgG fraction. Label: Fluorescein Isothiocyanate Isomer 1 |
| Concentration: | lot specific |
| Purification: | Affinity Chromatography on Protein A |
| Conjugation: | FITC |
| Storage: | Store undiluted at 2-8°C for one month or (in aliquots) at -20°C for longer. This product is photosensitive and should be protected from light. Avoid repeated freezing and thawing. |
| Stability: | Shelf life: one year from despatch. |
| Gene Name: | Fc fragment of IgG receptor IIa |
| Database Link: | Entrez Gene 2212 Human P12318 |

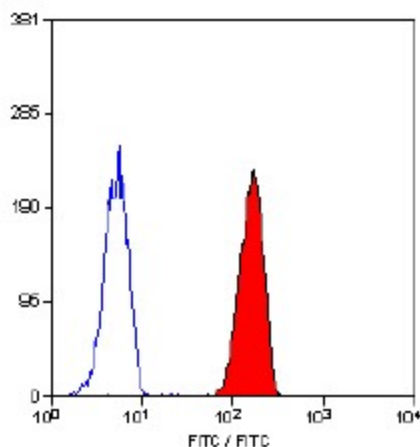


[View online »](#)

Background: Human CD32 antigen is a 40 kD glycoprotein that acts as a low affinity receptor for IgG (also known as Fc gamma RII). The antigen mediates several functions including endocytosis, activation of secretion, cytotoxicity and immunomodulation. CD32 is expressed by B cells, monocytes, granulocytes and platelets.

Synonyms: Fc-gamma RII-a, Fc-gamma-RIIa, CDw32, FCGR2A, FCG2, FCGR2A1, IGFR2

Product images:



Staining of human peripheral blood granulocytes with Mouse anti Human CD32-FITC.