

Product datasheet for **SM1092F**

CD32A (FCGR2A) Mouse Monoclonal Antibody [Clone ID: AT10]

Product data:

Product Type:	Primary Antibodies
Clone Name:	AT10
Applications:	FC
Recommended Dilution:	Flow Cytometry: Use 10 µl of neat-1/10 diluted antibody to label 10e6 cells or 100 µl whole blood.
Reactivity:	Canine, Human, Monkey
Host:	Mouse
Isotype:	IgG1
Clonality:	Monoclonal
Immunogen:	K562 cell line.
Specificity:	The antibody recognizes the Human CD32 antigen. Clone <i>AT10</i> blocks the binding of IgG to Fc gamma R11 (See Ref. 4). The use of SM1092LE is recommended for this purpose.
Formulation:	PBS, pH 7.4 containing 0.09% Sodium Azide as preservative and 1% BSA as stabilizer. Label: FITC State: Liquid purified IgG fraction. Label: Fluorescein Isothiocyanate Isomer 1
Concentration:	lot specific
Purification:	Affinity Chromatography on Protein A
Conjugation:	FITC
Storage:	Store undiluted at 2-8°C for one month or (in aliquots) at -20°C for longer. This product is photosensitive and should be protected from light. Avoid repeated freezing and thawing.
Stability:	Shelf life: one year from despatch.
Gene Name:	Fc fragment of IgG receptor IIa
Database Link:	Entrez Gene 2212 Human P12318



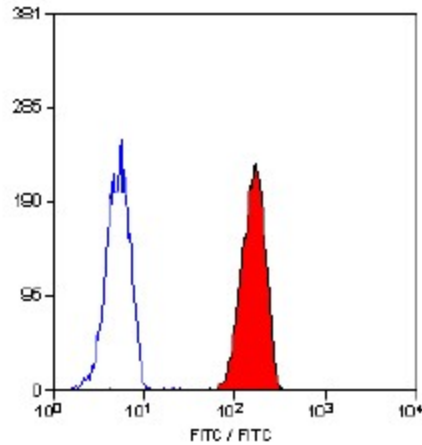
[View online »](#)

Background:

Human CD32 antigen is a 40 kD glycoprotein that acts as a low affinity receptor for IgG (also known as Fc gamma RII). The antigen mediates several functions including endocytosis, activation of secretion, cytotoxicity and immunomodulation. CD32 is expressed by B cells, monocytes, granulocytes and platelets.

Synonyms:

Fc-gamma RII-a, Fc-gamma-RIIa, CDw32, FCGR2A, FCG2, FCGR2A1, IGFR2

Product images:

Staining of human peripheral blood granulocytes with Mouse anti Human CD32-FITC.