

Product datasheet for **SM1086R**

CD27 Mouse Monoclonal Antibody [Clone ID: LT27]

Product data:

Product Type:	Primary Antibodies
Clone Name:	LT27
Applications:	FC
Recommended Dilution:	Flow cytometry.
Reactivity:	Human
Host:	Mouse
Isotype:	IgG2a
Clonality:	Monoclonal
Immunogen:	Spleen cells from immunised mice were fused with cells of the P3. X 63-Ag8-653 mouse myeloma cell line.
Specificity:	This antibody precipitates a molecule of MW55kD (120kD in non-reduced conditions) designated as the CD27 antigen.
Formulation:	PBS pH7.4 containing 0.09% Sodium Azide and 1% Bovine Serum Albumin Label: PE State: Lyophilized purified IgG Label: R. Phycoerythrin (RPE)
Reconstitution Method:	Restore with 1 ml distilled water
Concentration:	lot specific
Purification:	Affinity chromatography on Protein G
Conjugation:	PE
Storage:	Prior to and following reconstitution store the antibody at 2-8°C. DO NOT FREEZE! This product is photosensitive and should be protected from light.
Stability:	Shelf life: one year from despatch.
Gene Name:	CD27 molecule
Database Link:	Entrez Gene 939 Human P26842

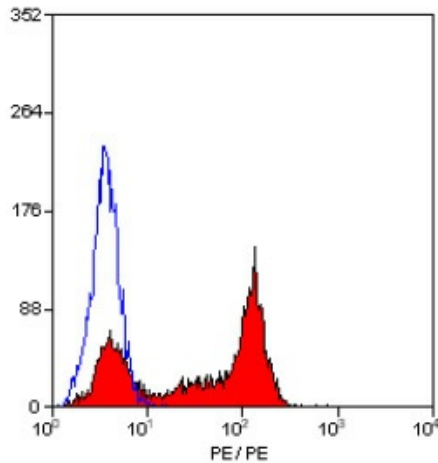


[View online »](#)

Background: This antigen is expressed on activated T lymphocytes and belongs to a family of proteins associated with the nerve growth factor receptor. CD27 is expressed by thymocytes and peripheral T cells and also by EBV transformed B cell lines.

Synonyms: TNFRSF7, CD27L receptor, T14

Product images:



Staining of human peripheral blood lymphocytes with MOUSE ANTI HUMAN CD27:RPE