

Product datasheet for **SM1086APC**

CD27 Mouse Monoclonal Antibody [Clone ID: LT27]

Product data:

Product Type:	Primary Antibodies
Clone Name:	LT27
Applications:	FC
Recommended Dilution:	Flow Cytometry analysis of human blood cells using 10 µl reagent / 100 µl of whole blood or 10 ⁶ cells in a suspension. The content of a vial (1 ml) is sufficient for 100 tests.
Reactivity:	Human
Host:	Mouse
Isotype:	IgG2a
Clonality:	Monoclonal
Immunogen:	Human peripheral blood lymphocytes
Specificity:	This antibody reacts with CD27 (T14), a 50-55 kDa type I transmembrane glycoprotein (member of the TNF-receptor superfamily) expressed on medullary thymocytes, peripheral T lymphocytes, some B lymphocytes and NK cells.
Formulation:	Phosphate buffered saline (PBS) solution containing 15mM sodium azide Label: APC State: Liquid Ig fraction Label: Conjugated with cross-linked Allophycocyanin under optimum conditions
Purification:	Size-exclusion chromatography
Conjugation:	APC
Storage:	Store undiluted at 2-8°C. DO NOT FREEZE! This product is photosensitive and should be protected from light.
Stability:	Shelf life: one year from despatch.
Gene Name:	CD27 molecule
Database Link:	Entrez Gene 939 Human P26842



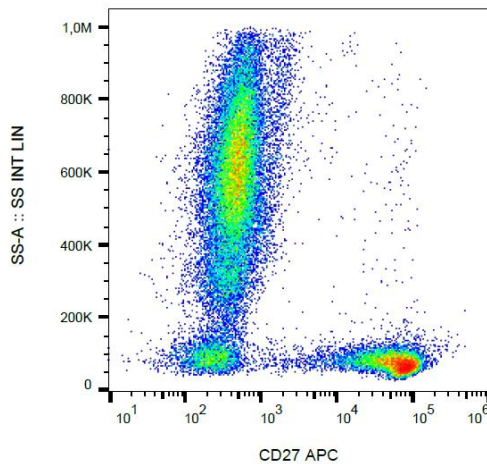
[View online »](#)

Background:

CD27 is a transmembrane 55 kDa protein of the nerve growth factor-receptor family, expressed as a disulfide-linked homodimer on mature thymocytes, peripheral blood T cells and a subpopulation of B cells. Activation of T cells via TCR-CD3 complex results in upregulation of CD27 expression on the plasma membrane as well as in the release of its soluble 28-32 kDa form, sCD27, detected in the plasma, urine or spinal fluid. This sCD27 is an important prognostic marker of acute and chronic B cell malignancies. RgpA, a cysteine proteinase, although activating T cells through the protease-activated receptors (PARs), degrades CD27 and counteracts T cell activation mediated by CD27 and its ligand CD70.

Synonyms:

TNFRSF7, CD27L receptor, T14

Product images:

Surface staining of human peripheral blood cells with anti-human CD27 (LT27) APC.