

Product datasheet for **SM1085R**

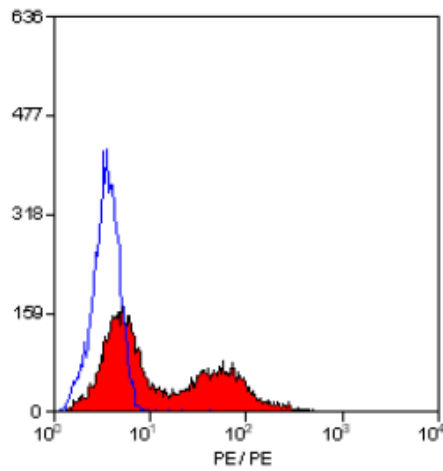
CD26 (DPP4) Mouse Monoclonal Antibody [Clone ID: M-A261]

Product data:

Product Type:	Primary Antibodies
Clone Name:	M-A261
Applications:	FC
Recommended Dilution:	Flow Cytometry.
Reactivity:	Human
Host:	Mouse
Isotype:	IgG1
Clonality:	Monoclonal
Immunogen:	Human T-cell leukaemia cells. Spleen cells from immunised BALB/c mice were fused with cells of the mouse P3.X63 Ag8.653 myeloma cell line.
Specificity:	This antibody recognises the CD26 cell surface antigen.
Formulation:	PBS, pH 7.4 containing 0.09% Sodium Azide as preservative and 1% BSA as stabilizer. Label: PE State: Lyophilized purified IgG fraction. Label: R. Phycoerythrin (RPE)
Reconstitution Method:	Restore with distilled water.
Conjugation:	PE
Storage:	Prior to and following reconstitution store the antibody undiluted at 2-8°C. DO NOT FREEZE! This product is photosensitive and should be protected from light.
Stability:	Shelf life: one year from despatch.
Gene Name:	dipeptidyl peptidase 4
Database Link:	Entrez Gene 1803 Human P27487
Background:	CD26 is a 110kD molecule expressed by activated T cells, B cells and macrophages. This molecule is also known as dipeptidylpeptidase IV.
Synonyms:	ADCP2, Dipeptidyl peptidase 4, DPP IV, Dipeptidyl peptidase IV, ADABP, TP103



[View online »](#)

Product images:

Staining of human peripheral blood lymphocytes
with MOUSE ANTI HUMAN CD26:RPE