

Product datasheet for **SM1085PS**

CD26 (DPP4) Mouse Monoclonal Antibody [Clone ID: M-A261]

Product data:

Product Type:	Primary Antibodies
Clone Name:	M-A261
Applications:	FC, IHC, IP
Recommended Dilution:	Flow Cytometry: 1/50-1/100. Use 10 µl of the suggested working dilution to label 10e6 cells or 100 µl whole blood. Immunoprecipitation. Immunohistochemistry on Frozen Sections: The epitope recognised by this antibody is reported to be sensitive to formaldehyde fixation and tissue processing. We recommend the use of acetone fixation for frozen sections. Recommended positive control tissue: Thymus.
Reactivity:	Human
Host:	Mouse
Isotype:	IgG1
Clonality:	Monoclonal
Immunogen:	Human T-cell leukaemia cells (T-CLL). Spleen cells from immunised BALB/c mice were fused with cells of the mouse P3.X63 Ag8.653 myeloma cell line.
Specificity:	This antibody recognises the CD26 cell surface antigen.
Formulation:	PBS containing 0.09% Sodium Azide as preservative State: Purified State: Liquid purified IgG fraction
Concentration:	lot specific
Purification:	Affinity Chromatography on Protein G
Conjugation:	Unconjugated
Storage:	Store undiluted at 2-8°C for one month or (in aliquots) at -20°C for longer. Avoid repeated freezing and thawing.
Stability:	Shelf life: one year from despatch.
Gene Name:	dipeptidyl peptidase 4



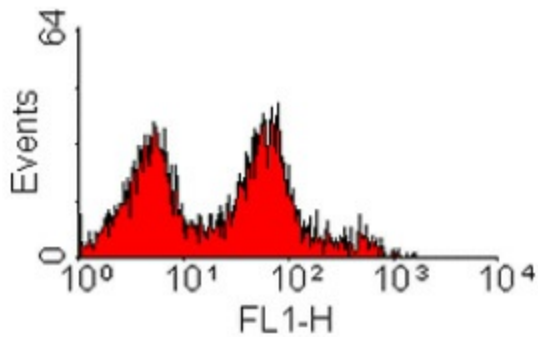
[View online »](#)

Database Link: [Entrez Gene 1803 Human P27487](#)

Background: CD26 is a 110 kD molecule expressed by activated T cells, B cells and macrophages. This molecule is also known as dipeptidylpeptidase IV.

Synonyms: ADCP2, Dipeptidyl peptidase 4, DPP IV, Dipeptidyl peptidase IV, ADABP, TP103

Product images:



staining of human peripheral blood lymphocytes