

Product datasheet for **SM1085P**

CD26 (DPP4) Mouse Monoclonal Antibody [Clone ID: M-A261]

Product data:

Product Type:	Primary Antibodies
Clone Name:	M-A261
Applications:	FC, IHC, IP
Recommended Dilution:	Flow Cytometry: Use 10 µl of 1/50-1/100 diluted CD26 Antibody to label 10 ⁶ cells or 100 µl whole blood. Immunohistochemistry on Frozen Sections: The epitope recognised by this antibody is reported to be sensitive to formaldehyde fixation and tissue processing. We recommends the use of acetone fixation for frozen sections. <i>Recommended Positive Control: Thymus.</i> Immunoprecipitation.
Reactivity:	Human
Host:	Mouse
Isotype:	IgG1
Clonality:	Monoclonal
Immunogen:	Human T-cell leukaemia cells. Spleen cells from immunised BALB/c mice were fused with cells of the mouse P3.X63 Ag8.653 myeloma cell line.
Specificity:	This antibody recognises the CD26 cell surface antigen.
Formulation:	PBS, pH 7.4 State: Purified State: Liquid purified IgG fraction Preservative: 0.09% Sodium Azide
Concentration:	lot specific
Purification:	Affinity Chromatography on Protein G
Conjugation:	Unconjugated
Storage:	Store undiluted at 2-8°C for one month or (in aliquots) at -20°C for longer. Avoid repeated freezing and thawing.
Stability:	Shelf life: one year from despatch.
Gene Name:	dipeptidyl peptidase 4



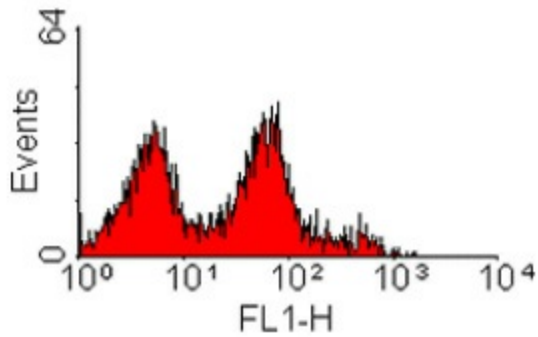
[View online »](#)

Database Link: [Entrez Gene 1803 Human P27487](#)

Background: CD26 is a 110kD molecule expressed by activated T cells, B cells and macrophages. This molecule is also known as dipeptidylpeptidase IV.

Synonyms: ADCP2, Dipeptidyl peptidase 4, DPP IV, Dipeptidyl peptidase IV, ADABP, TP103

Product images:



staining of human peripheral blood lymphocytes.