

Product datasheet for **SM1082F**

CD24 Mouse Monoclonal Antibody [Clone ID: SN3]

Product data:

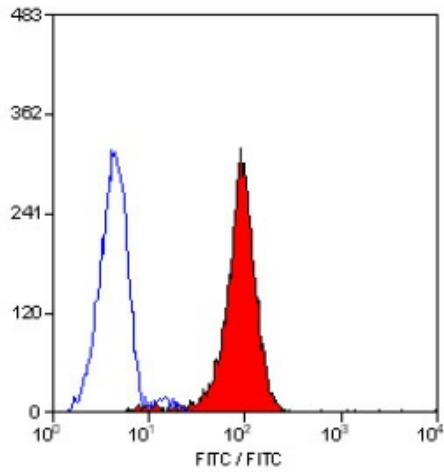
Product Type:	Primary Antibodies
Clone Name:	SN3
Applications:	FC
Recommended Dilution:	Flow Cytometry: Neat-1/10; Use 10µl of the suggested working dilution to label 10e6 cells or 100µl whole blood.
Reactivity:	Human
Host:	Mouse
Isotype:	IgG1
Clonality:	Monoclonal
Immunogen:	Glycoproteins purified from human NALM-1 cell line. Spleen cells from immunised BALB/c mice were fused with cells of a mouse myeloma cell line.
Specificity:	This antibody recognises the CD24 cell surface antigen.
Formulation:	PBS, pH 7.4 containing 0.09% Sodium Azide and 1% Bovine Serum Albumin. Label: FITC State: Liquid purified IgG fraction. Label: Fluorescein Isothiocyanate Isomer 1
Concentration:	lot specific
Purification:	Affinity Chromatography on Protein G.
Conjugation:	FITC
Storage:	Store the antibody undiluted at 2-8°C for one month or (in aliquots) at -20°C for longer. Avoid repeated freezing and thawing. This product is photosensitive and should be protected from light.
Stability:	Shelf life: one year from despatch.
Gene Name:	CD24 molecule
Database Link:	Entrez Gene 100133941 Human P25063
Background:	CD24 is a heavily glycosylated molecule of 35-45kD. CD24 is expressed by granulocytes and B lymphocytes, and by some activated T cells and T cell malignancies.



[View online »](#)

Synonyms: X62 heat stable antigen, HSA

Product images:



Staining of human peripheral blood granulocytes with MOUSE ANTI HUMAN CD24:FITC